

D & D PRODUCTION INC.®

ASSEMBLY NO. 262220MR-1

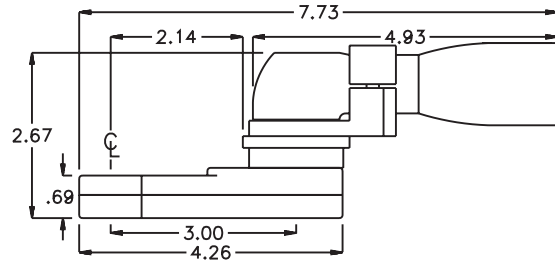
HEAD NO. 8316

CROWFOOT ASS'Y
Rev. A
12-18-06

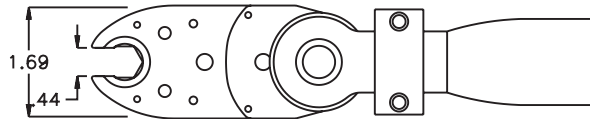
2500 WILLIAMS DRIVE • WATERFORD, MI • 48328

PHONE : (248) 334-2112 • FAX : (248) 334-0062

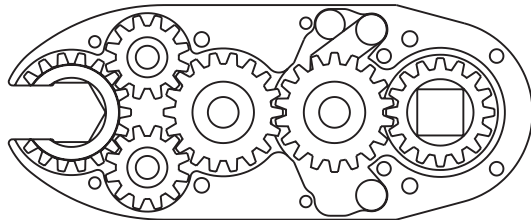
SIDE VIEW



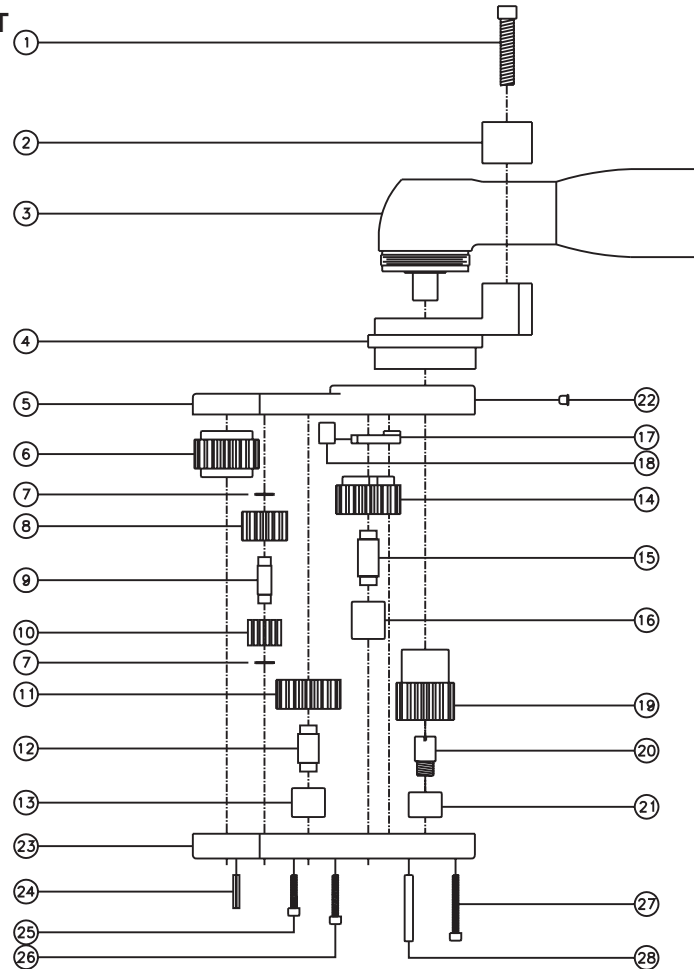
TOP VIEW



GEAR ASSEMBLY



PARTS BLOWOUT



ITEM	DESCRIPTION	PART NO.	ITEM	DESCRIPTION	PART NO.	ITEM	DESCRIPTION	PART NO.
1	Screw #1 (2)	S-1016SHC	11	Lg. Idler Gear	201814	21	Needle Bearing	B-56
2	Yoke	FA-2423-ST61-C	12	Lg. Idler Pin	IP-5722	22	Grease Fitting	1877
3	Motor	ETV ST61-50-10	13	Needle Bearing	B-57	23	Gear Housing (Bottom)	262220MR-1-P
4	Adapter	FA-2423-ST61-10B	14	Cam Gear	201818-CR	24	Roll Pin (2)	RP-608
5	Gear Housing (Top)	262220M-1-H	15	Cam Pin	IP-5926	25	Screw #2 (2)	S-408SH
6	Socket Gear	201822-1-XX	16	Needle Bearing	B-59	26	Screw #3 (2)	S-410SH
7	Sm. Thrust Race (4)	W-991-020	17	Pawl	1004-RPS-P	27	Screw #4 (4)	S-414SH
8	Sm. Idler Gear (2)	201214	18	Pawl Spring	RSS-0810	28	Dowel Pin (2)	DP-816
9	Sm. Idler Pin (2)	IP-0722	19	Drive Gear	201634F-38SD			
10	Bearing Needles (28)	LR15M98	20	Drive Pin	TP-5619LH			