



D & D PRODUCTION INC.

ASSEMBLY NO. 261720-1-5

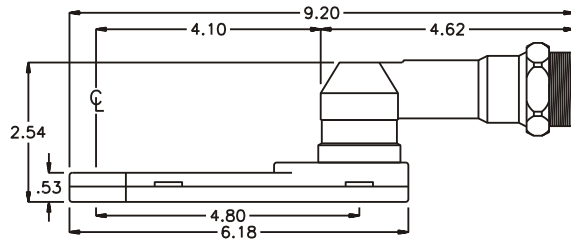
HEAD NO. 5380

CROWFOOT ASS'Y
Rev. B
06-19-98

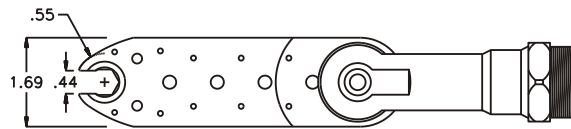
2500 WILLIAMS DRIVE • WATERFORD, MI • 48328

PHONE : (248) 334-2112 • FAX : (248) 334-0062

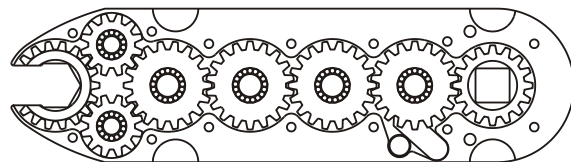
SIDE VIEW



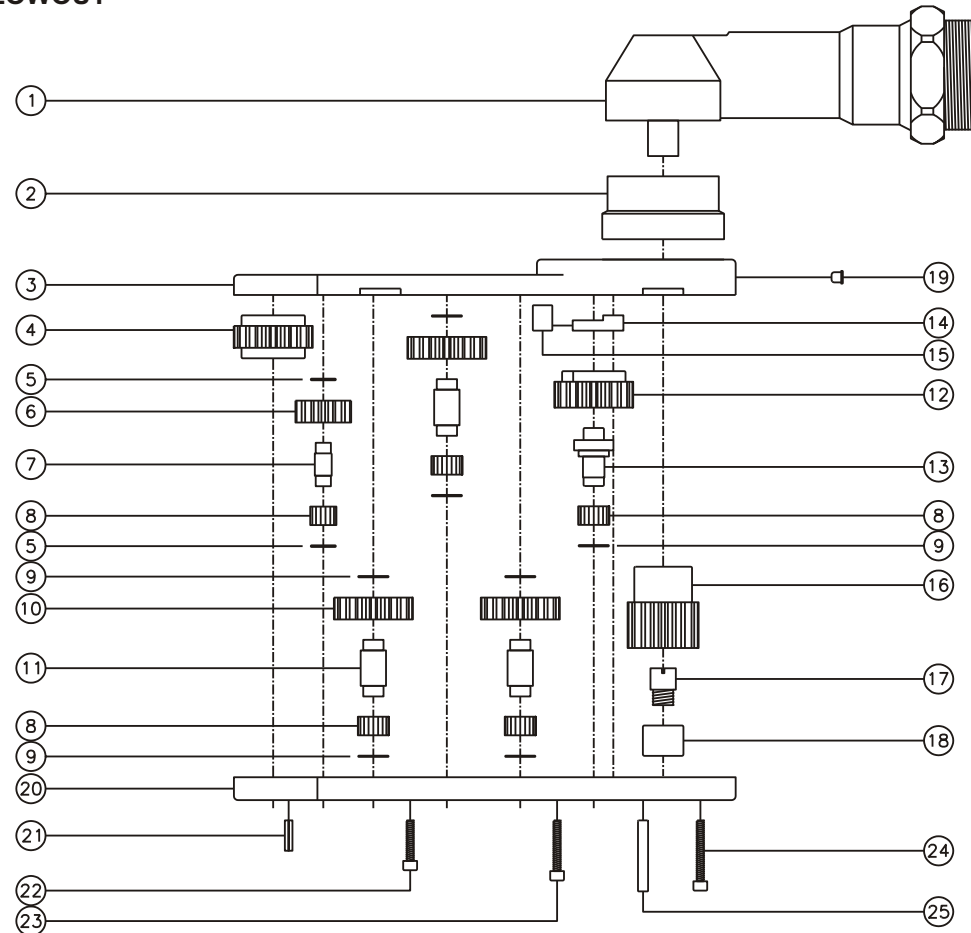
TOP VIEW



GEAR ASSEMBLY



PARTS BLOWOUT



ITEM	DESCRIPTION	PART NO.	ITEM	DESCRIPTION	PART NO.	ITEM	DESCRIPTION	PART NO.
1	Angle Head	A/C 36	11	Lg. Idler Pin (3)	IP-0817	21	Roll Pin (2)	RP-606
2	Angle Head Adapter	HA 3530	12	Cam Gear	201814-C	22	Screw #1 (6)	S-408SH
3	Gear Housing (Top)	261720-1-5-H	13	Cam Pin	IP-5380	23	Screw #2 (2)	S-410SH
4	Socket Gear	201817-1-XX	14	Pawl	5380-P	24	Screw #3 (4)	S-412SH
5	Sm. Thrust Race (4)	W-991-020	15	Pawl Spring	RS-0810	25	Dowel Pin (2)	DP-814
6	Sm. Idler Gear (2)	201209	16	Drive Gear	201632F-SD			
7	Sm. Idler Pin (2)	IP-0717	17	Drive Pin	TP-5615			
8	Bearing Needles (96)	LR15M58	18	Needle Bearing	B-56			
9	Lg. Thrust Race (7)	W-1390-016	19	Grease Fitting	1877			
10	Lg. Idler Gear (3)	201809	20	Gear Housing (Bottom)	261720-1-5-P			