



D & D PRODUCTION INC.

ASSEMBLY NO. 251817R-00C

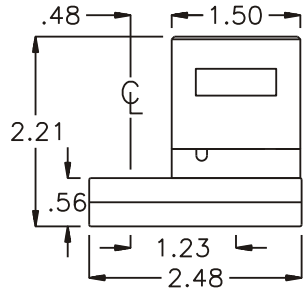
HEAD NO. 8240

CROWFOOT ASS'Y
Rev. A
10-19-99

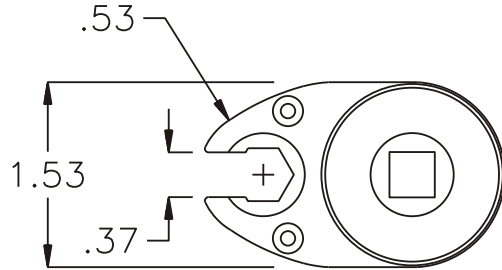
2500 WILLIAMS DRIVE • WATERFORD, MI • 48328

PHONE : (248) 334-2112 • FAX : (248) 334-0062

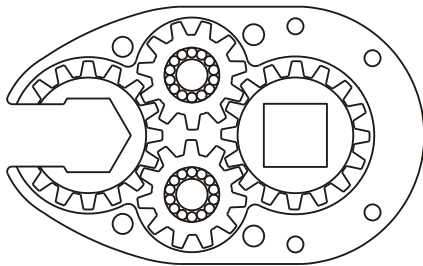
SIDE VIEW



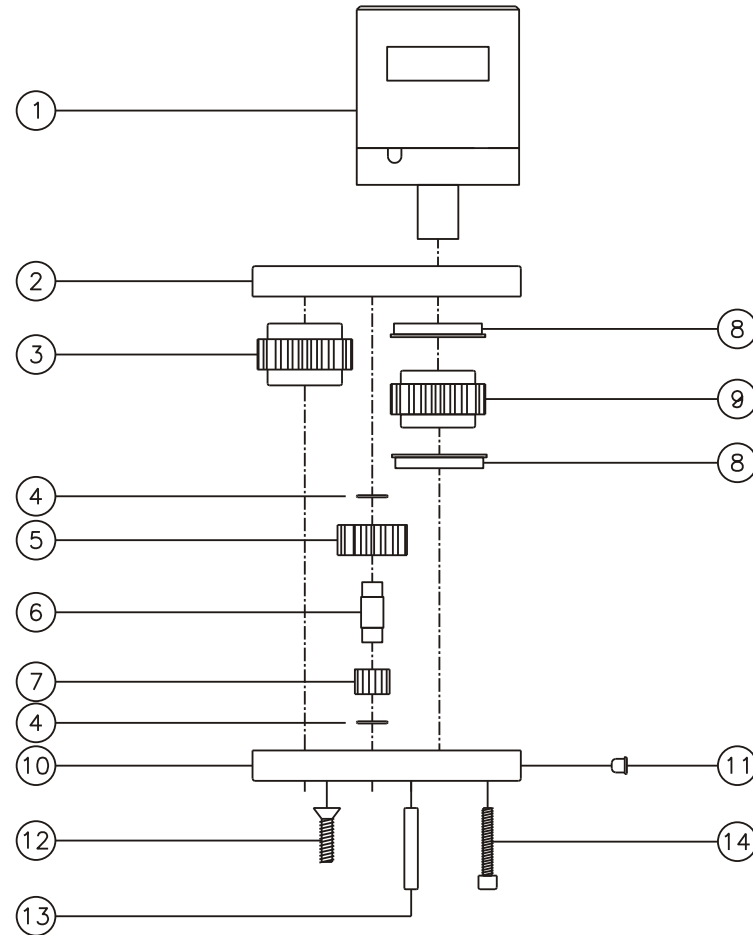
TOP VIEW



GEAR ASSEMBLY



PARTS BLOWOUT



ITEM	DESCRIPTION	PART NO.	ITEM	DESCRIPTION	PART NO.	ITEM	DESCRIPTION	PART NO.
1	Clutch	CTA-10A-XX	11	Grease Fitting	1877			
2	Gear Housing (Top)	251817R-00C-H	12	Screw #1 (2)	S-608			
3	Socket Gear	201618-1-XX	13	Dowel Pin (2)	DP-812			
4	Thrust Race (4)	W-991-020	14	Screw #2 (4)	S-410SH			
5	Idler Gear (2)	201109						
6	Idler Pin (2)	IP-0718						
7	Bearing Needles (28)	LR15M58						
8	Bushing (2)	A-1102						
9	Drive Gear	201617-SD						
10	Gear Housing (Bottom)	251817R-00C-P						