



ASSEMBLY NO. 251817R-00

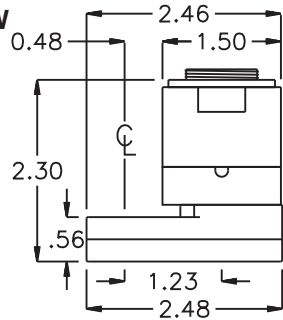
HEAD NO. 8238

TUBE NUT ASS'Y
Rev. A
12-29-09

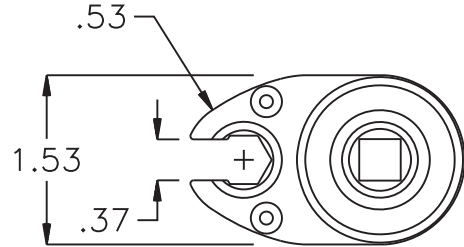
2500 WILLIAMS DRIVE • WATERFORD, MI • 48328

PHONE : (248) 334-2112 • FAX : (248) 334-0062

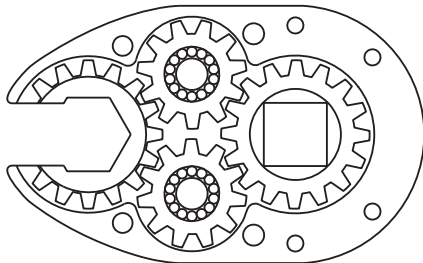
SIDE VIEW



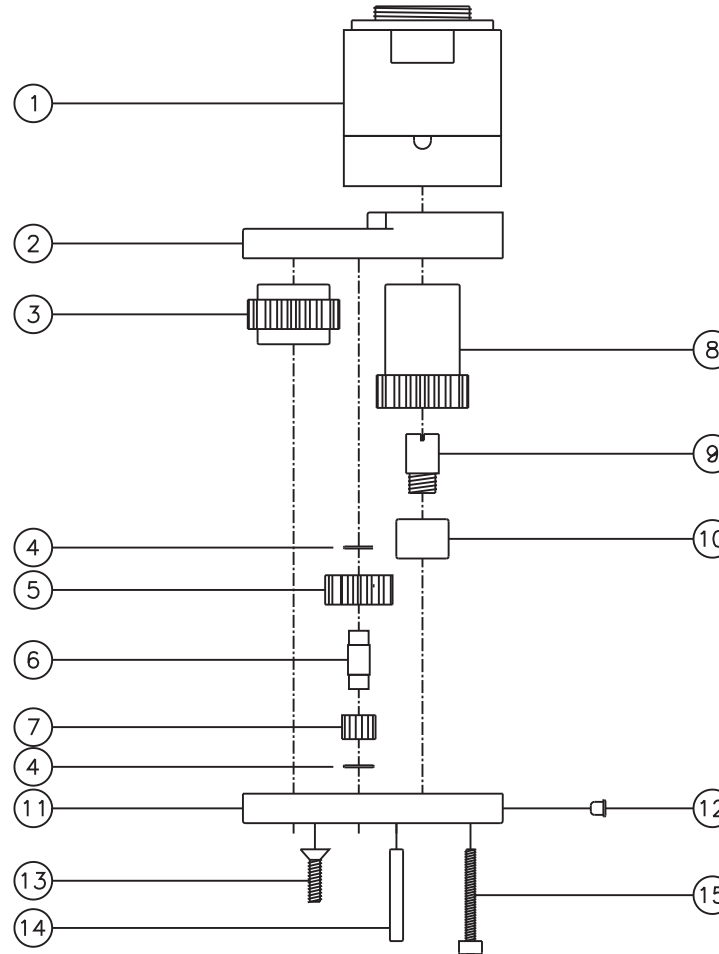
TOP VIEW



GEAR ASSEMBLY



PARTS BLOWOUT



ITEM	DESCRIPTION	PART NO.	ITEM	DESCRIPTION	PART NO.	ITEM	DESCRIPTION	PART NO.
1	Clutch	CTA-10A-25S06	11	Gear Housing (Bottom)	251817R-00-P			
2	Gear Housing (Top)	251817R-00-H	12	Grease Fitting	1877			
3	Socket Gear	201618-1-(XX)-D	13	Screw #1 (2)	S-608			
4	Thrust Race (4)	W-991-020	14	Dowel Pin (2)	DP-814			
5	Idler Gear (2)	201109iD	15	Screw #2 (4)	S-414SH			
6	Idler Pin (2)	IP-0718						
7	Bearing Needles (28)	LR15M58						
8	Drive Gear	201627B-38SD						
9	Drive Pin	TP-5618						
10	Needle Bearing	B-56						

Grease Schedule: 10K torque cycles, Lubriplate GR-132 or equivalent.