



D & D PRODUCTION INC.®

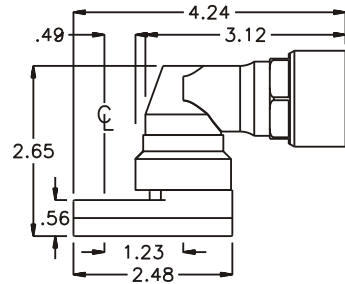
ASSEMBLY NO. 251817R-00

HEAD NO. 8236

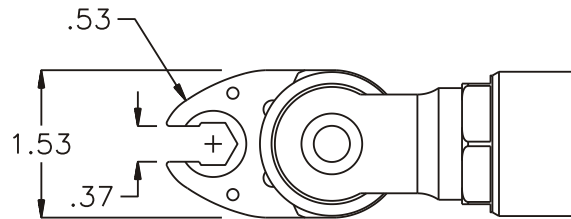
CROWFOOT ASS'Y
Rev. A
03-24-03

2500 WILLIAMS DRIVE • WATERFORD, MI • 48328 PHONE : (248) 334-2112 • FAX : (248) 334-0062

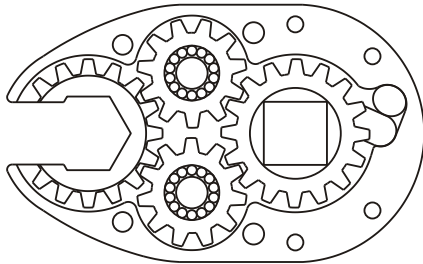
SIDE VIEW



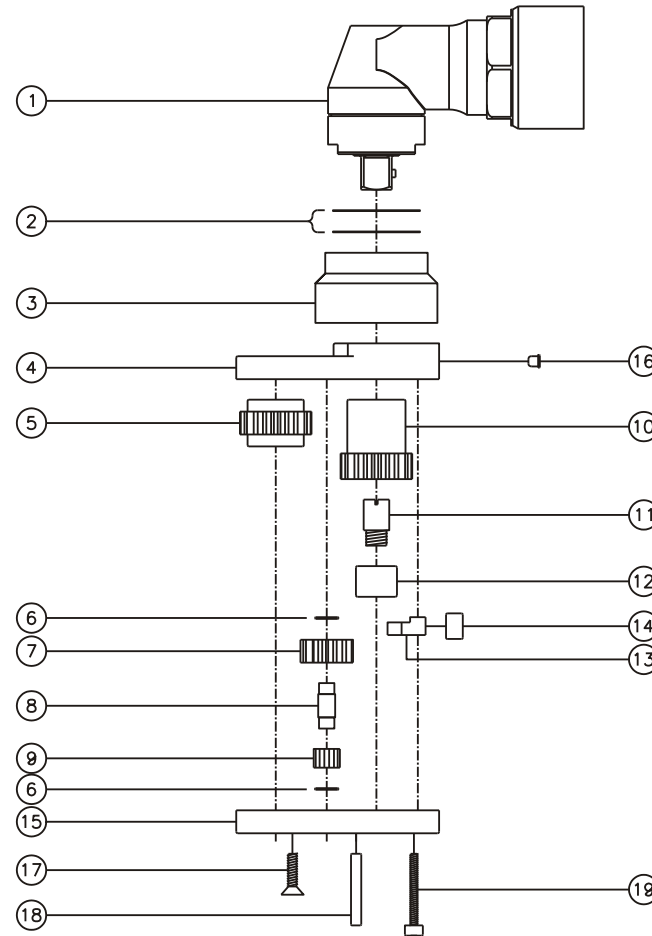
TOP VIEW



GEAR ASSEMBLY



PARTS BLOWOUT



ITEM	DESCRIPTION	PART NO.	ITEM	DESCRIPTION	PART NO.	ITEM	DESCRIPTION	PART NO.
1	Angle Head	AM3C	11	Drive Cam Pin	TP-5618			
2	Shim Set	W-3430-AM3C	12	Needle Bearing	B-56			
3	Angle Head Adapter	HA-2422-AM3C	13	Pawl	8225-P			
4	Gear Housing (Top)	251817R-00-H	14	Pawl Spring	RSS-0810			
5	Socket Gear	201618-1-XX	15	Gear Housing (Bottom)	251817R-00-P			
6	Thrust Race (4)	W-991-020	16	Grease Fitting	1877			
7	Idler Gear (2)	201109	17	Screw #1 (2)	S-608			
8	Idler Pin (2)	IP-0718	18	Dowel Pin (2)	DP-814			
9	Bearing Needles (28)	LR15M58	19	Screw #2 (4)	S-414SH			
10	Drive Cam Gear	201631F-38SDC						