



D & D PRODUCTION INC.

ASSEMBLY NO. 251817R-00

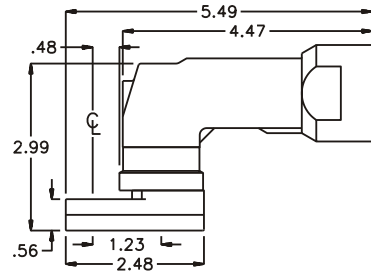
HEAD NO. 8232

CROWFOOT ASS'Y
Rev. A
01-15-98

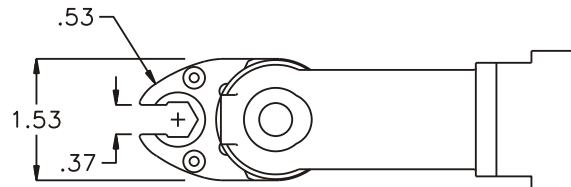
2500 WILLIAMS DRIVE • WATERFORD, MI • 48328

PHONE : (248) 334-2112 • FAX : (248) 334-0062

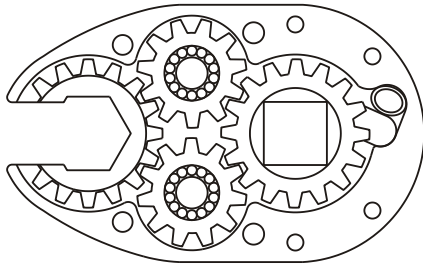
SIDE VIEW



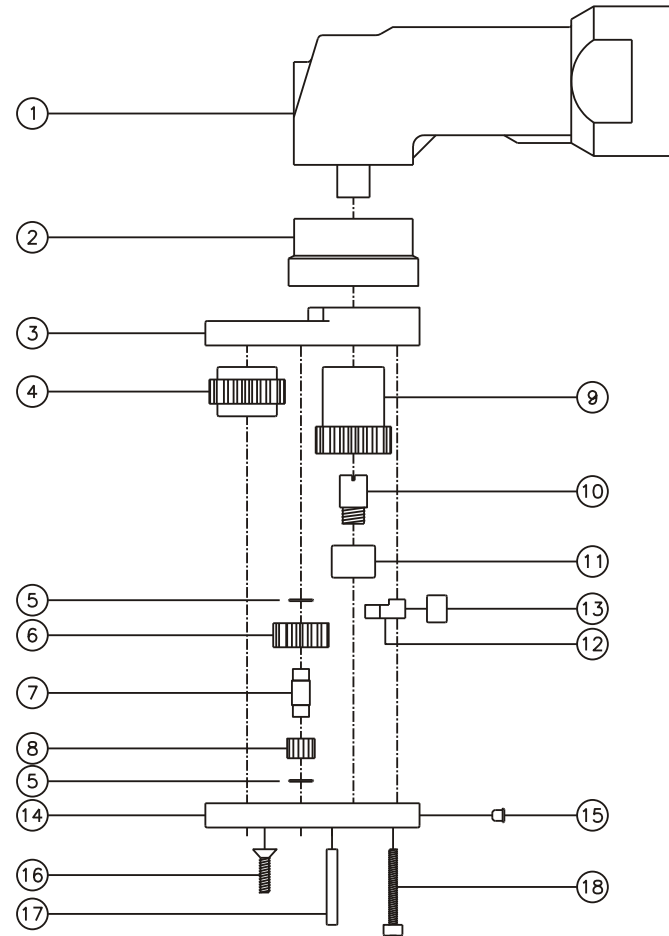
TOP VIEW



GEAR ASSEMBLY



PARTS BLOWOUT



ITEM	DESCRIPTION	PART NO.	ITEM	DESCRIPTION	PART NO.	ITEM	DESCRIPTION	PART NO.
1	Angle Head	GSE 5714	11	Needle Bearing	B-56			
2	Angle Head Adapter	HA 5714	12	Pawl	8225-P			
3	Gear Housing (Top)	251817R-00-H	13	Pawl Spring	RS-0810			
4	Socket Gear	201618-1-XX	14	Gear Housing (Bottom)	251817R-00-P			
5	Thrust Race (4)	W-991-020	15	Grease Fitting	1877			
6	Idler Gear (2)	201109	16	Screw #1 (2)	S-608			
7	Idler Pin (2)	IP-0718	17	Dowel Pin (2)	DP-814			
8	Bearing Needles (28)	LR15M58	18	Screw #2 (4)	S-414SH			
9	Drive Cam Gear	201632F-SDC						
10	Drive Cam Pin	TP-5618						