



D & D PRODUCTION INC.

ASSEMBLY NO. 251817FR-0

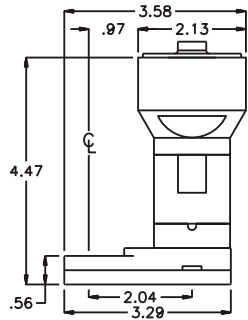
HEAD NO. 8229

CROWFOOT ASS'Y
Rev. C
04-09-02

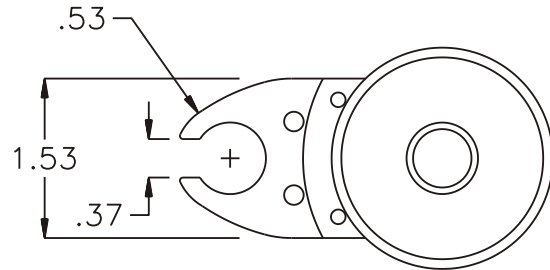
2500 WILLIAMS DRIVE • WATERFORD, MI • 48328

PHONE : (248) 334-2112 • FAX : (248) 334-0062

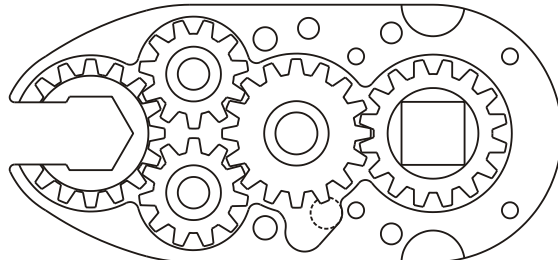
SIDE VIEW



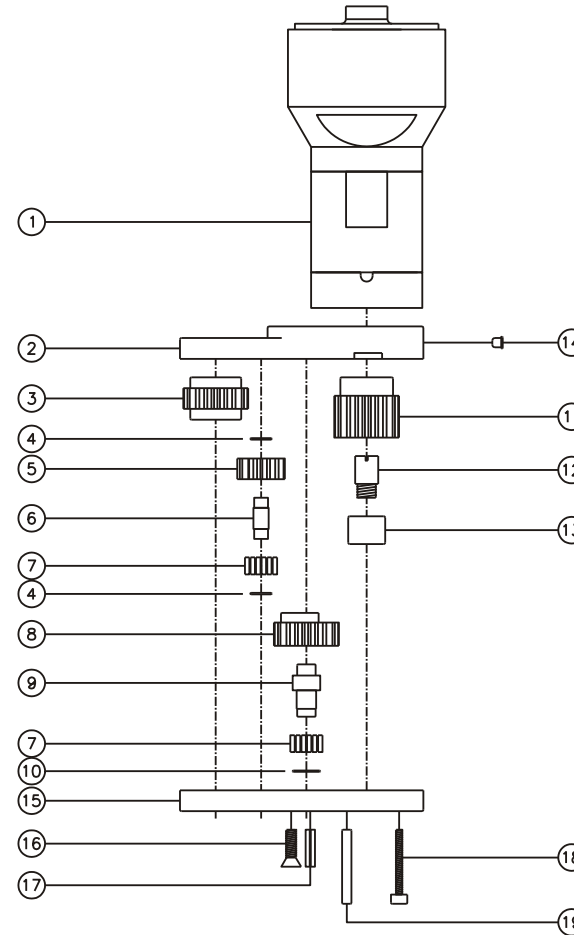
TOP VIEW



GEAR ASSEMBLY



PARTS BLOWOUT



ITEM	DESCRIPTION	PART NO.	ITEM	DESCRIPTION	PART NO.	ITEM	DESCRIPTION	PART NO.
1	Clutch	CTA-10A-ETB6	11	Drive Gear	201626F-38SD			
2	Gear Housing (Top)	251817FR-0-H	12	Drive Pin	TP-5618			
3	Socket Gear	201618-1-XX	13	Needle Bearing	B-56			
4	Thrust Race (4)	W-991-020	14	Grease Fitting	1877			
5	Idler Gear (2)	201109	15	Gear Housing (Bottom)	251817FR-0-P			
6	Idler Pin (2)	IP-0718	16	Screw #1 (2)	S-808			
7	Bearing Needles (45)	LR15M58	17	Roll Pin	RP-808			
8	Cam Gear	201614-C	18	Screw #2 (4)	S-414SH			
9	Cam Pin	IP-0823	19	Dowel Pin (2)	DP-816			
10	Thrust Race	W-1390-016						