



D & D PRODUCTION INC.

ASSEMBLY NO. 251817F2-0

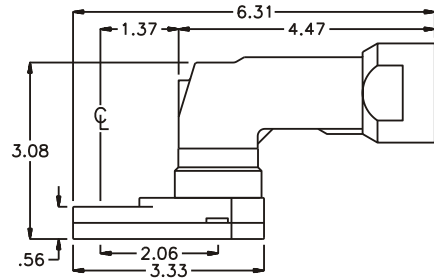
HEAD NO. 8228

CROWFOOT ASS'Y
Rev. B
06-22-01

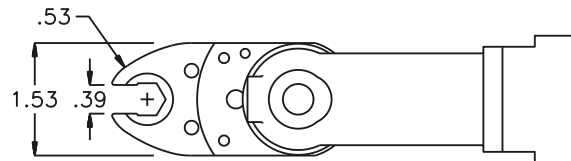
2500 WILLIAMS DRIVE • WATERFORD, MI • 48328

PHONE : (248) 334-2112 • FAX : (248) 334-0062

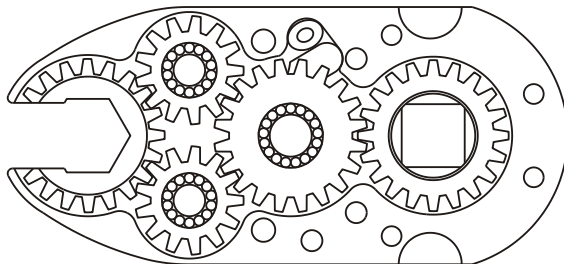
SIDE VIEW



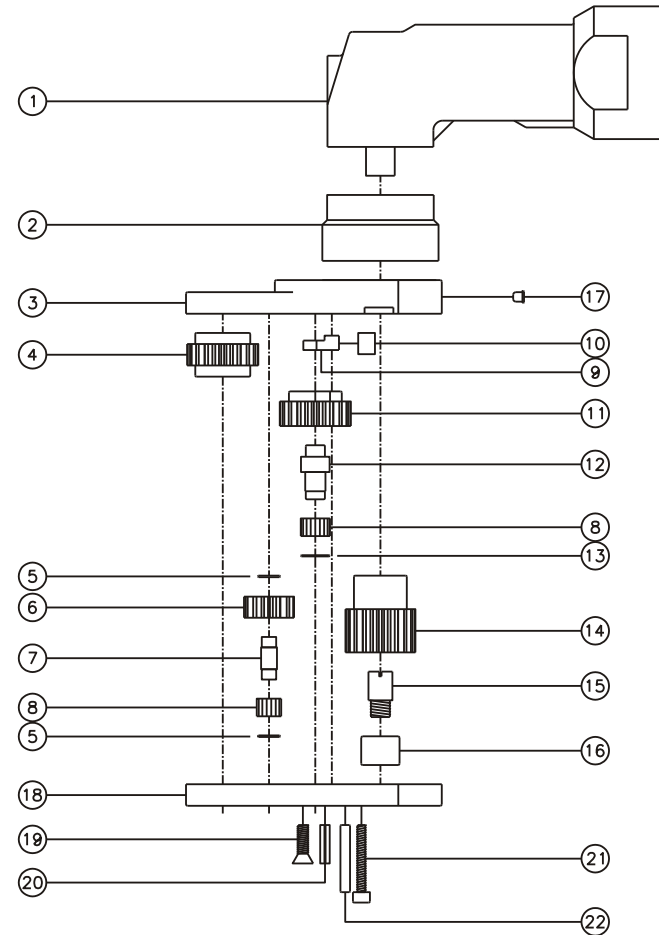
TOP VIEW



GEAR ASSEMBLY



PARTS BLOWOUT



| ITEM | DESCRIPTION | PART NO. | ITEM | DESCRIPTION | PART NO. | ITEM | DESCRIPTION | PART NO. |
|------|----------------------|--------------|------|-----------------------|--------------|------|---------------|----------|
| 1 | Angle Head | GSE 5714 | 11 | Cam Gear | 242014-CR | 21 | Screw #2 (4) | S-614SH |
| 2 | Angle Head Adapter | HA 5714B | 12 | Cam Pin | IP-0823 | 22 | Dowel Pin (2) | DP-814 |
| 3 | Gear Housing (Top) | 251817F2-0-H | 13 | Thrust Race | W-1390-016 | | | |
| 4 | Socket Gear | 242018-1-XX | 14 | Drive Gear | 242032F-SD | | | |
| 5 | Thrust Race (4) | W-991-020 | 15 | Drive Pin | TP-5619LH | | | |
| 6 | Idler Gear (2) | 241309 | 16 | Needle Bearing | B-56 | | | |
| 7 | Idler Pin (2) | IP-0718 | 17 | Grease Fitting | 1877 | | | |
| 8 | Bearing Needles (45) | LR15M58 | 18 | Gear Housing (Bottom) | 251817F2-0-P | | | |
| 9 | Pawl | 8225-P | 19 | Screw #1 (2) | S-808 | | | |
| 10 | Pawl Spring | RS-0810 | 20 | Roll Pin | RP-808 | | | |