



D & D PRODUCTION INC.

ASSEMBLY NO. 251817F-1

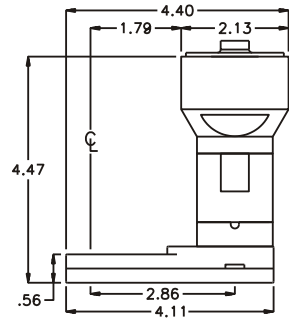
HEAD NO. 8252

CROWFOOT ASS'Y
Rev. B
06-22-01

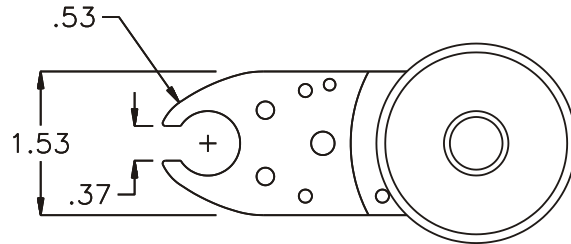
2500 WILLIAMS DRIVE • WATERFORD, MI • 48328

PHONE : (248) 334-2112 • FAX : (248) 334-0062

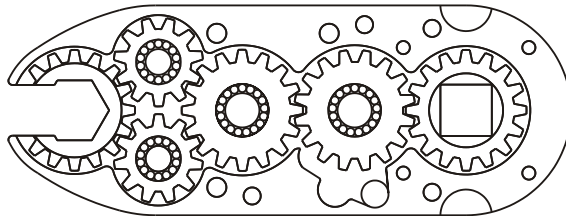
SIDE VIEW



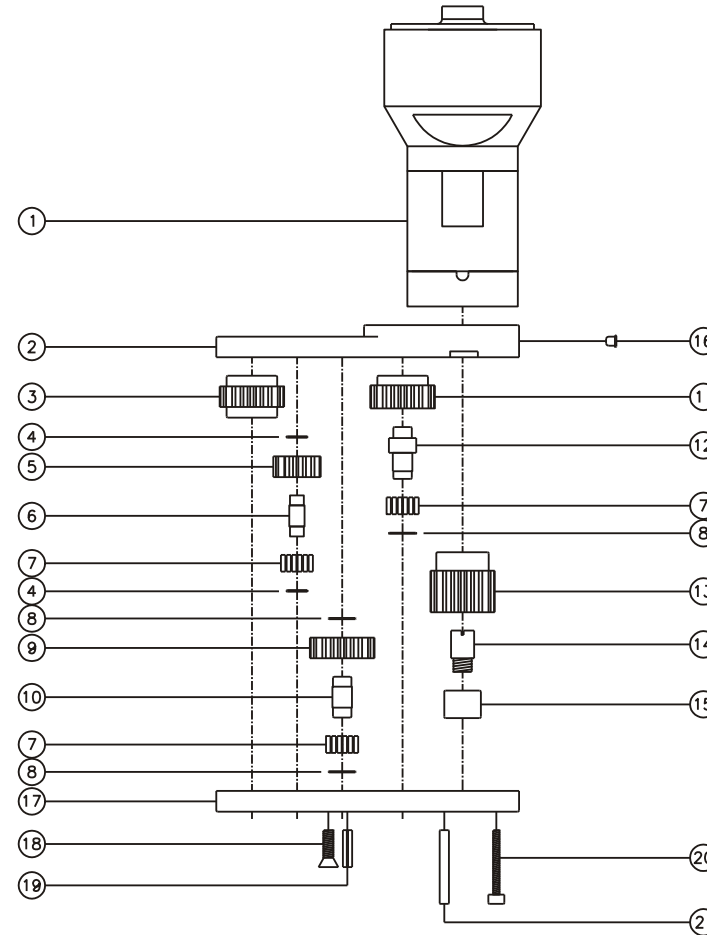
TOP VIEW



GEAR ASSEMBLY



PARTS BLOWOUT



ITEM	DESCRIPTION	PART NO.	ITEM	DESCRIPTION	PART NO.	ITEM	DESCRIPTION	PART NO.
1	Clutch	CTA-10A-ETB6	11	Cam Gear	201614-C	21	Dowel Pin (2)	DP-816
2	Gear Housing (Top)	251817F-1-H	12	Cam Pin	IP-0823			
3	Socket Gear	201618-1-XX	13	Drive Gear	201626F-38SD			
4	Sm. Thrust Race (4)	W-991-020	14	Drive Pin	TP-5618			
5	Sm. Idler Gear (2)	201109	15	Needle Bearing	B-56			
6	Sm. Idler Pin (2)	IP-0718	16	Grease Fitting	1877			
7	Bearing Needles (62)	LR15M58	17	Gear Housing (Bottom)	251817F-1-P			
8	Lg. Thrust Race (3)	W-1390-016	18	Screw #1 (3)	S-808			
9	Lg. Idler Gear	201609	19	Roll Pin (2)	RP-808			
10	Lg. Idler Pin	IP-0818	20	Screw #2 (4)	S-414SH			