



D & D PRODUCTION INC.®

ASSEMBLY NO. 251817F-1 HEAD NO. 8249

CROWFOOT ASS'Y
Rev. A
11-22-02

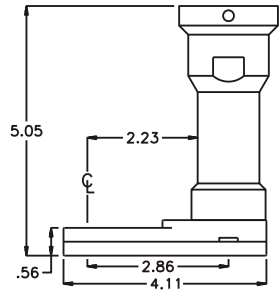
FOR ATLAS COPCO ETD S7-50-13CTADS MOTOR

2500 WILLIAMS DRIVE • WATERFORD, MI • 48328

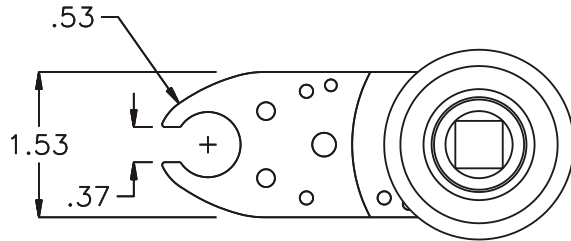
PHONE : (248) 334-2112 •

FAX : (248) 334-0062

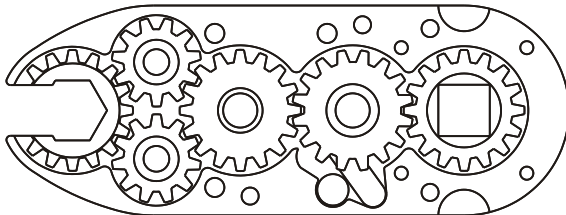
SIDE VIEW



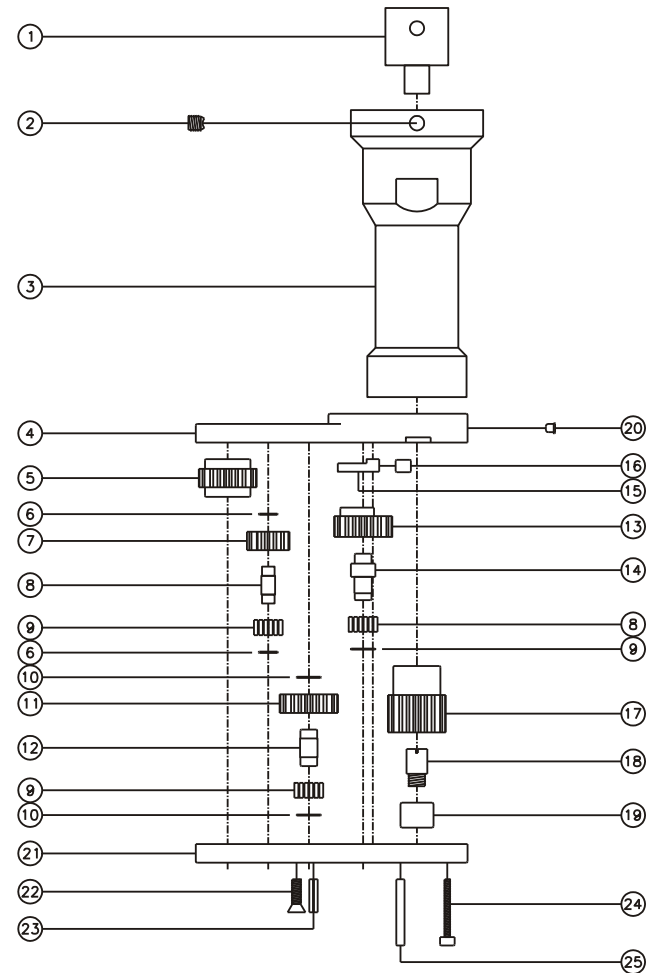
TOP VIEW



GEAR ASSEMBLY



PARTS BLOWOUT



ITEM	DESCRIPTION	PART NO.	ITEM	DESCRIPTION	PART NO.	ITEM	DESCRIPTION	PART NO.
1	Drive Shaft	DS-12F38M3041	11	Lg. Idler Gear	201609	21	Gear Housing (Bottom)	251817F-1-P
2	Set Screw (2)	SS-1403F	12	Lg. Idler Pin	IP-0818	22	Screw #1 (3)	S-808
3	Adapter	HAL-2478-ETD13	13	Cam Gear	201614-C	23	Roll Pin (2)	RP-808
4	Gear Housing (Top)	251817F-1-H	14	Cam Pin	IP-0823	24	Screw #2 (4)	S-414SH
5	Socket Gear	201618-1-XX	15	Pawl	8210-P	25	Dowel Pin (2)	DP-816
6	Sm. Thrust Race (4)	W-991-020	16	Pawl Spring	RSS-0810			
7	Sm. Idler Gear (2)	201109	17	Drive Gear	201632F-SD			
8	Sm. Idler Pin (2)	IP-0718	18	Drive Pin	TP-5618			
9	Bearing Needles (62)	LR15M58	19	Needle Bearing	B-56			
10	Lg. Thrust Race (3)	W-1390-016	20	Grease Fitting	1877			