

D & D PRODUCTION INC.

ASSEMBLY NO. 251817F-0

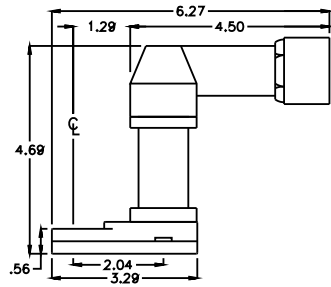
HEAD NO. 8237

CROWFOOT ASS'Y
Rev. A
10-12-04

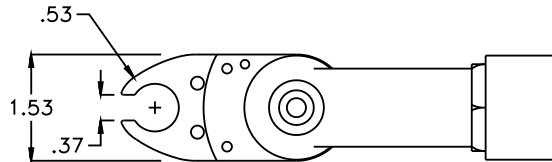
2500 WILLIAMS DRIVE • WATERFORD, MI • 48328

PHONE : (248) 334-2112 • FAX : (248) 334-0062

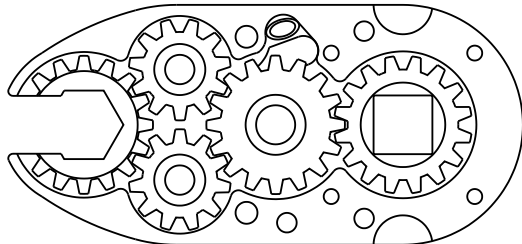
SIDE VIEW



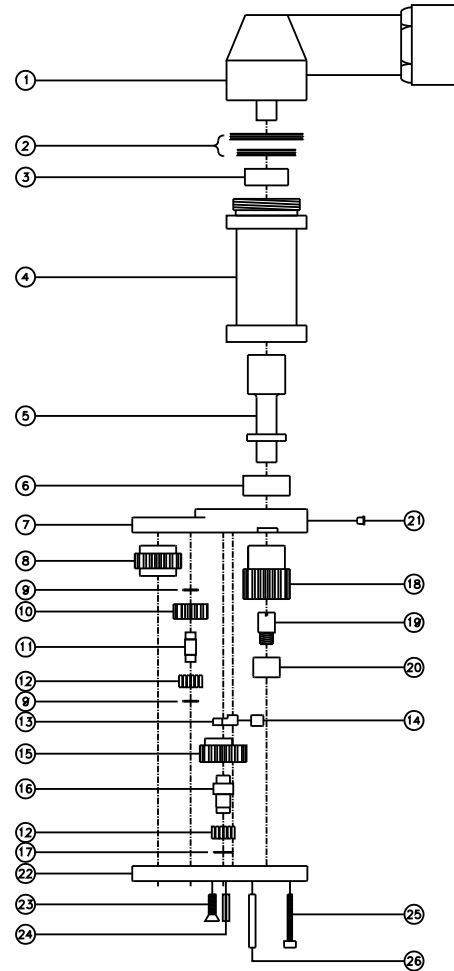
TOP VIEW



GEAR ASSEMBLY



PARTS BLOWOUT



ITEM	DESCRIPTION	PART NO.	ITEM	DESCRIPTION	PART NO.	ITEM	DESCRIPTION	PART NO.
1	Angle Head	AM3 (Customer Supplied)	11	Idler Pin (2)	IP-0718	21	Grease Fitting	1877
2	Shim Set	W-AM3	12	Bearing Needles (45)	LR15M58	22	Gear Housing (Bottom)	251817F-0-P
3	Needle Bearing	B-105	13	Pawl	8225-P	23	Screw #1 (2)	S-808
4	Adapter	HA-2438-AM3	14	Pawl Spring	RS-0810	24	Roll Pin	RP-808
5	Needle Bearing	B-116	15	Cam Gear	201614-CR	25	Screw #2 (4)	S-414SH
6	Drive Shaft	DS-06F06M2365	16	Cam Pin	IP-0823	26	Dowel Pin (2)	DP-816
7	Gear Housing (Top)	251817F-0-H	17	Thrust Race	W-1390-016	27		
8	Socket Gear	201618-1-XX	18	Drive Gear	201632FG-SD	28		
9	Thrust Race (4)	W-991-020	19	Drive Pin	TP-5619LH	29		
10	Idler Gear (2)	2011109	20	Needle Bearing	B-56	30		