



D & D PRODUCTION INC.®

# ASSEMBLY NO. 251817F-0

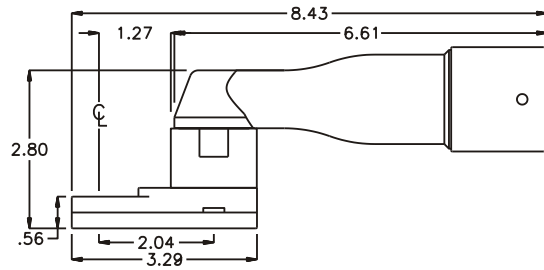
## HEAD NO. 8224

CROWFOOT ASS'Y  
Rev. A  
06-19-02

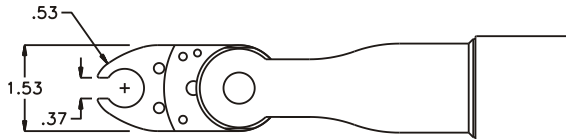
2500 WILLIAMS DRIVE • WATERFORD, MI • 48328

PHONE : (248) 334-2112 • FAX : (248) 334-0062

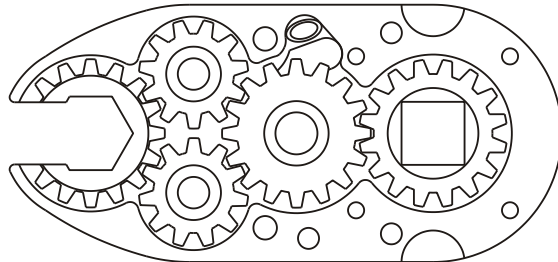
### SIDE VIEW



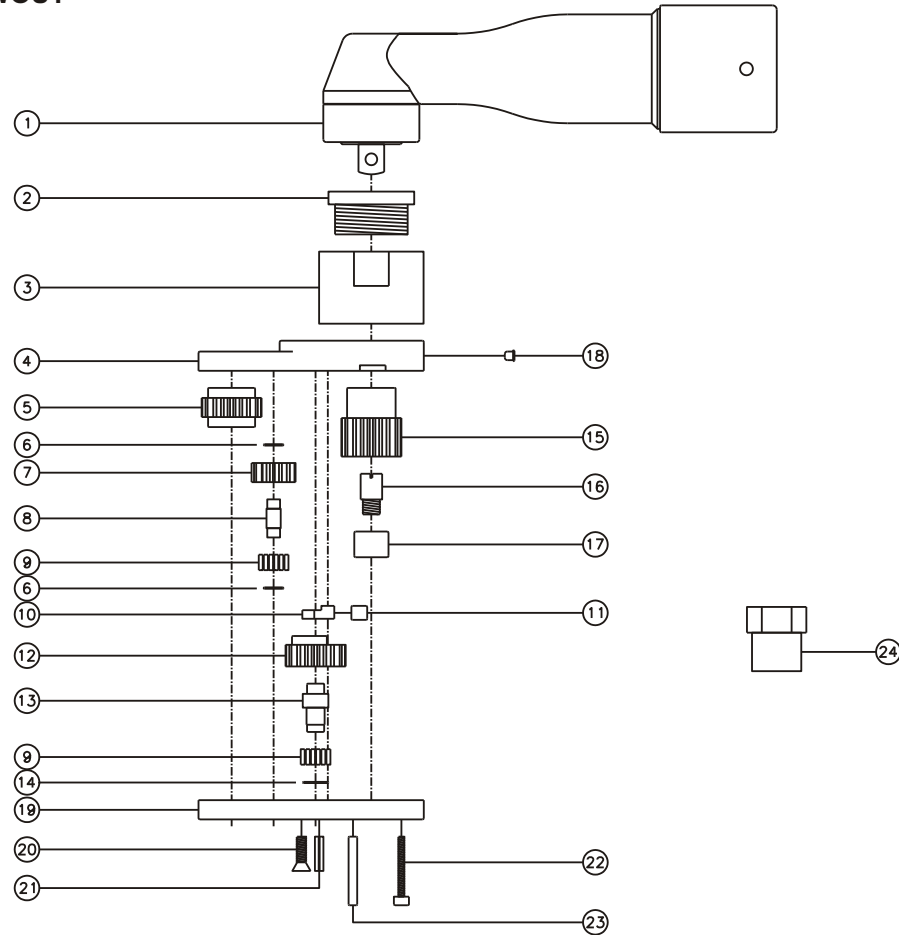
### TOP VIEW



### GEAR ASSEMBLY



### PARTS BLOWOUT



ITEM	DESCRIPTION	PART NO.	ITEM	DESCRIPTION	PART NO.	ITEM	DESCRIPTION	PART NO.
1	Angle Head	GSE 66A50	11	Pawl Spring	RS-0810	21	Roll Pin	RP-808
2	Adapter Nut	N-2433-66A50	12	Cam Gear	201614-CR	22	Screw #2 (4)	S-414SH
3	Angle Head Adapter	HAF-2433-66A50	13	Cam Pin	IP-0823	23	Dowel Pin (2)	DP-816
4	Gear Housing (Top)	251817F-0-H	14	Thrust Race	W-1390-016	24	Adapter Nut Socket (Optional)	ENT-24M38SD
5	Socket Gear	201618-1-XX	15	Drive Gear	201632F-SD			
6	Thrust Race (4)	W-991-020	16	Drive Pin	TP-5619LH			
7	Idler Gear (2)	201109	17	Needle Bearing	B-56			
8	Idler Pin (2)	IP-0718	18	Grease Fitting	1877			
9	Bearing Needles (45)	LR15M58	19	Gear Housing (Bottom)	251817F-0-P			
10	Pawl	8225-P	20	Screw #1 (2)	S-808			