



D & D PRODUCTION INC.

# ASSEMBLY NO. 251817-00

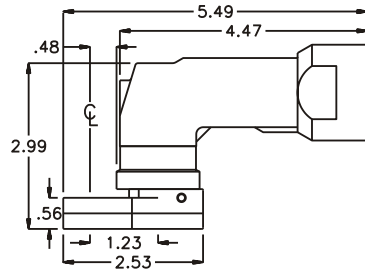
## HEAD NO. 8222

CROWFOOT ASS'Y  
Rev. A  
01-15-98

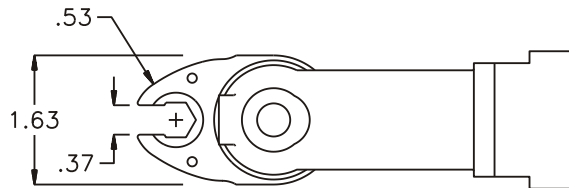
2500 WILLIAMS DRIVE • WATERFORD, MI • 48328

PHONE : (248) 334-2112 • FAX : (248) 334-0062

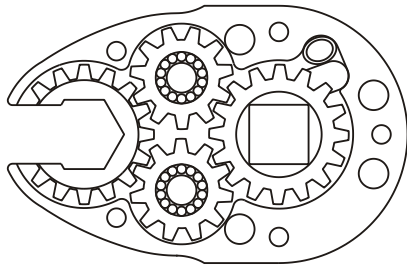
### SIDE VIEW



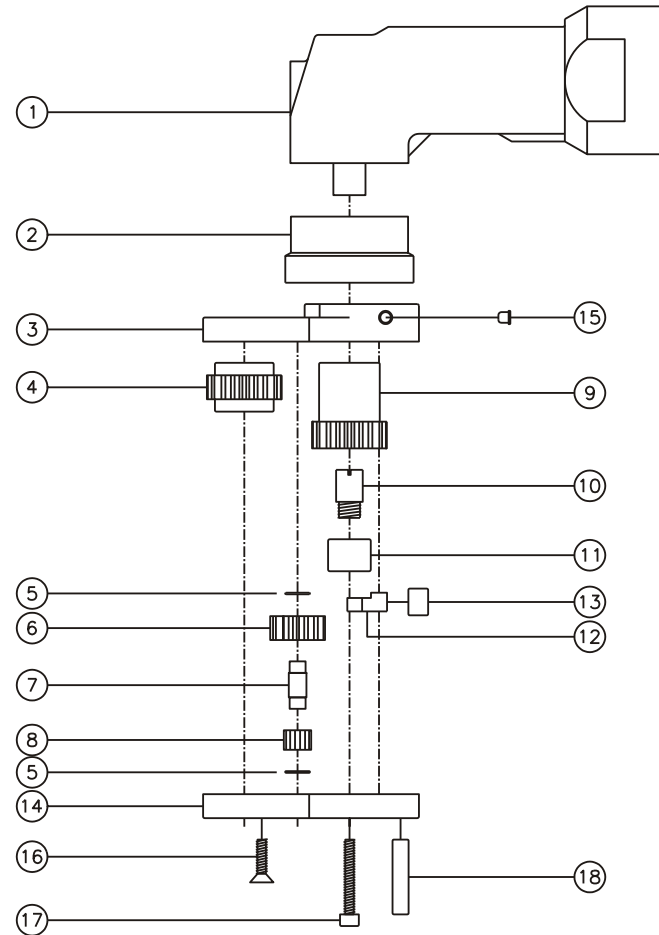
### TOP VIEW



### GEAR ASSEMBLY



### PARTS BLOWOUT



| ITEM | DESCRIPTION          | PART NO.    | ITEM | DESCRIPTION           | PART NO.    | ITEM | DESCRIPTION | PART NO. |
|------|----------------------|-------------|------|-----------------------|-------------|------|-------------|----------|
| 1    | Angle Head           | GSE 5714    | 11   | Needle Bearing        | B-56        |      |             |          |
| 2    | Angle Head Adapter   | HA 5714     | 12   | Pawl                  | 8225-P      |      |             |          |
| 3    | Gear Housing (Top)   | 251817-00-H | 13   | Pawl Spring           | RS-0810     |      |             |          |
| 4    | Socket Gear          | 201618-1-XX | 14   | Gear Housing (Bottom) | 251817-00-P |      |             |          |
| 5    | Thrust Race (4)      | W-991-020   | 15   | Grease Fitting        | 1877        |      |             |          |
| 6    | Idler Gear (2)       | 201109      | 16   | Screw #1 (2)          | S-608       |      |             |          |
| 7    | Idler Pin (2)        | IP-0718     | 17   | Screw #2 (3)          | S-614SH     |      |             |          |
| 8    | Bearing Needles (28) | LR15M58     | 18   | Dowel Pin (4)         | DP-1214     |      |             |          |
| 9    | Drive Cam Gear       | 201632F-SDC |      |                       |             |      |             |          |
| 10   | Drive Cam Pin        | TP-5618     |      |                       |             |      |             |          |