



D & D PRODUCTION INC.

ASSEMBLY NO. 251617-0

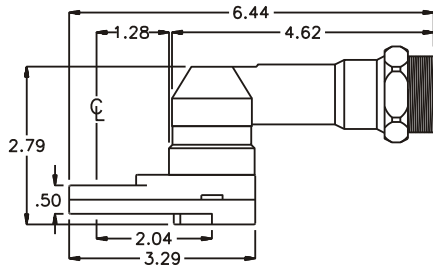
HEAD NO. 8200

CROWFOOT ASS'Y
Rev. C
12-23-93

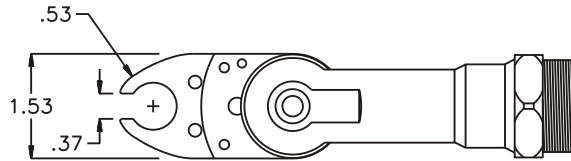
2500 WILLIAMS DRIVE • WATERFORD, MI • 48328

PHONE : (248) 334-2112 • FAX : (248) 334-0062

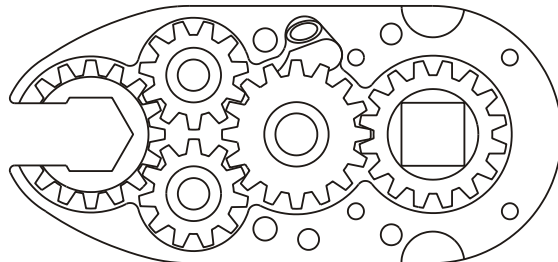
SIDE VIEW



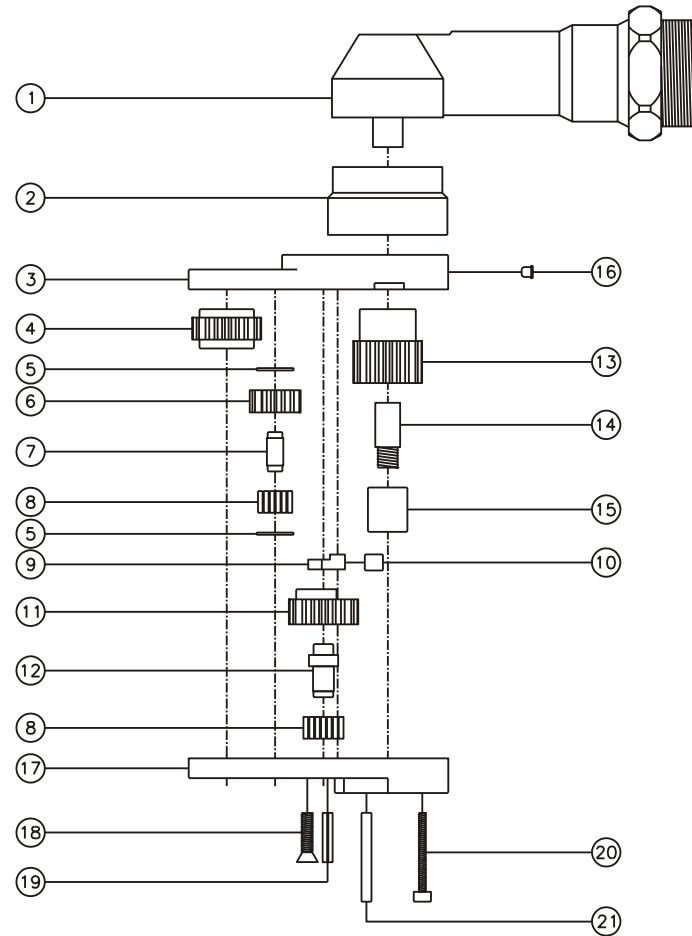
TOP VIEW



GEAR ASSEMBLY



PARTS BLOWOUT



ITEM	DESCRIPTION	PART NO.	ITEM	DESCRIPTION	PART NO.	ITEM	DESCRIPTION	PART NO.
1	Angle Head	A/C 36	11	Cam Gear	201614-CR	21	Dowel Pin (2)	DP-818
2	Angle Head Adapter	HA 3530	12	Cam Pin	IP-0822			
3	Gear Housing	251617-0-H	13	Drive Gear	201630-SD			
4	Socket Gear	201616-1-XX	14	Drive Pin	TP-5926LH			
5	Thrust Race (4)	TRA-029	15	Needle Bearing	B-59			
6	Idler Gear (2)	201109	16	Grease Fitting	1877			
7	Idler Pin (2)	IP-0716	17	Bottom Plate	251617-0-P			
8	Bearing Needles (45)	LR15M9	18	Screw #1 (2)	S-810			
9	Pawl	8200-P	19	Roll Pin	RP-810			
10	Pawl Spring	RS-0810	20	Screw #2 (4)	S-418SH			