



D & D PRODUCTION INC.

ASSEMBLY NO. 243220A

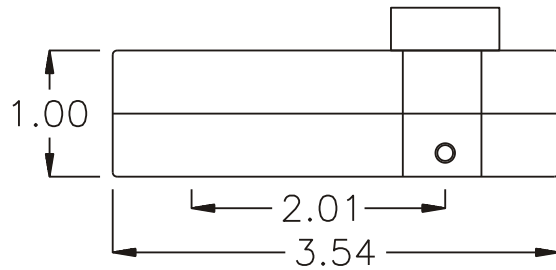
HEAD NO. 1475

CROWFOOT ASS'Y
Rev. A
04-13-02

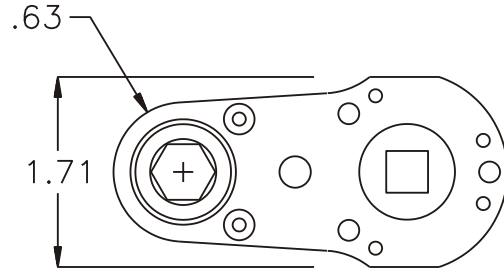
2500 WILLIAMS DRIVE • WATERFORD, MI • 48328

PHONE : (248) 334-2112 • FAX : (248) 334-0062

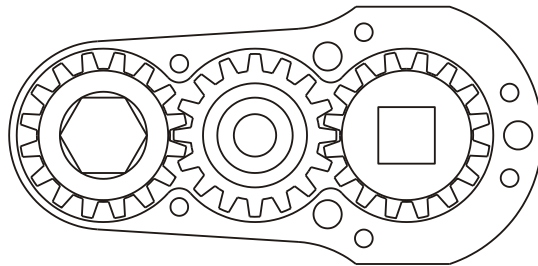
SIDE VIEW



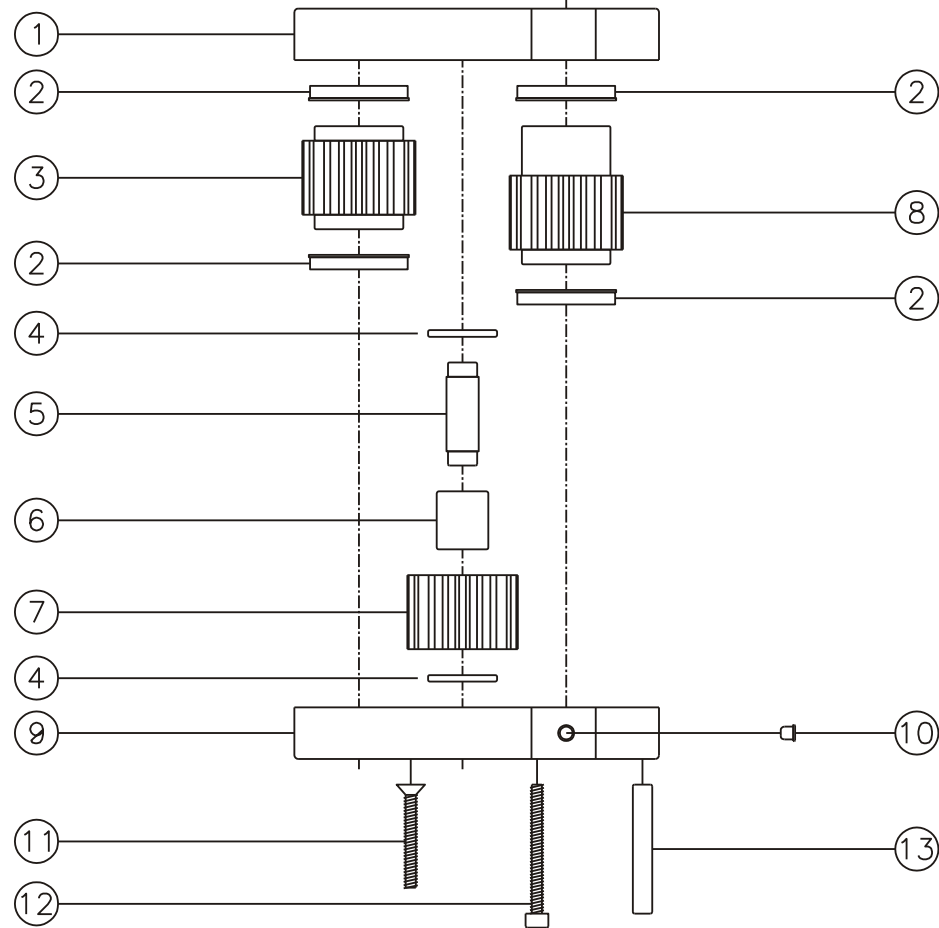
TOP VIEW



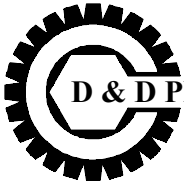
GEAR ASSEMBLY



PARTS BLOWOUT



ITEM	DESCRIPTION	PART NO.	ITEM	DESCRIPTION	PART NO.	ITEM	DESCRIPTION	PART NO.
1	Gear Housing (Top)	243220A-H	11	Screw #1 (2)	S-616			
2	Bushing (4)	A-5509	12	Screw #2 (4)	S-620SH			
3	Socket Gear	161632S-XX	13	Dowel Pin (2)	DP-1220			
4	Thrust Race (2)	TRB-512M						
5	Idler Pin	IP-5932						
6	Needle Bearing	B-59						
7	Idler Gear	161623						
8	Drive Gear	161643-38SD						
9	Gear Housing (Bottom)	243220A-P						
10	Grease Fitting	1877						



CROWFOOT ASSEMBLY

D & D PRODUCTION INC.

April 13, 2002

2500 WILLIAMS DRIVE • WATERFORD, MI • 48328

PHONE : (248) 334-2112 • FAX : (248) 334-0062

ASSEMBLY NO. 243220A HEAD NO. 1475

ITEM	DESCRIPTION	PART NO.	LIST PRICE
	Complete Assembly	243220A	\$1,150.00
1	Gear Housing (Top)	243220A-H	\$340.00
2	Bushing (4)	A-5509	\$35.00
3	Socket Gear	161632S-XX*	\$145.00
4	Thrust Race (2)	TRB-512M	\$4.00
5	Idler Pin	IP-5932	\$19.60
6	Needle Bearing	B-59	\$7.80
7	Idler Gear	161623	\$85.00
8	Drive Gear	161643-38SD	\$130.00
9	Gear Housing (Bottom)	243220A-P	\$340.00
10	Grease Fitting	1877	\$4.50
11	Screw #1 (2)	S-616	\$0.75
12	Screw #2 (4)	S-620SH	\$0.75
13	Dowel Pin (2)	DP-1220	\$0.75

*SOCKET NUMBER WILL DEPEND ON HEX SIZE. SEE SOCKET PART SHEET FOR ORDERING INFORMATION.