



D & D PRODUCTION INC.

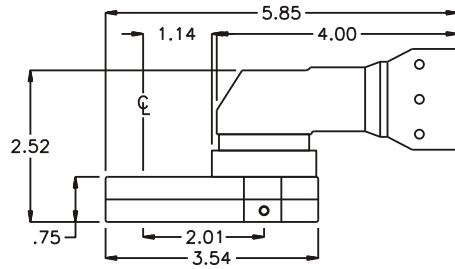
ASSEMBLY NO. 242420AS

HEAD NO. 1415

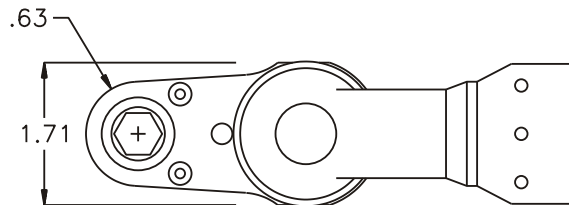
CROWFOOT ASS'Y
Rev. B
10-19-99

2500 WILLIAMS DRIVE • WATERFORD, MI • 48328 PHONE : (248) 334-2112 • FAX : (248) 334-0062

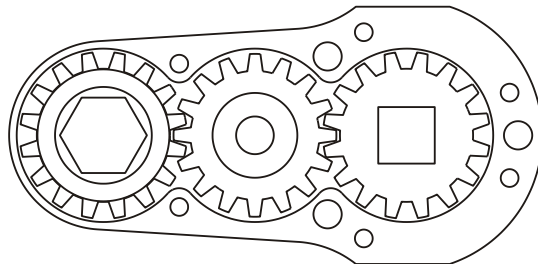
SIDE VIEW



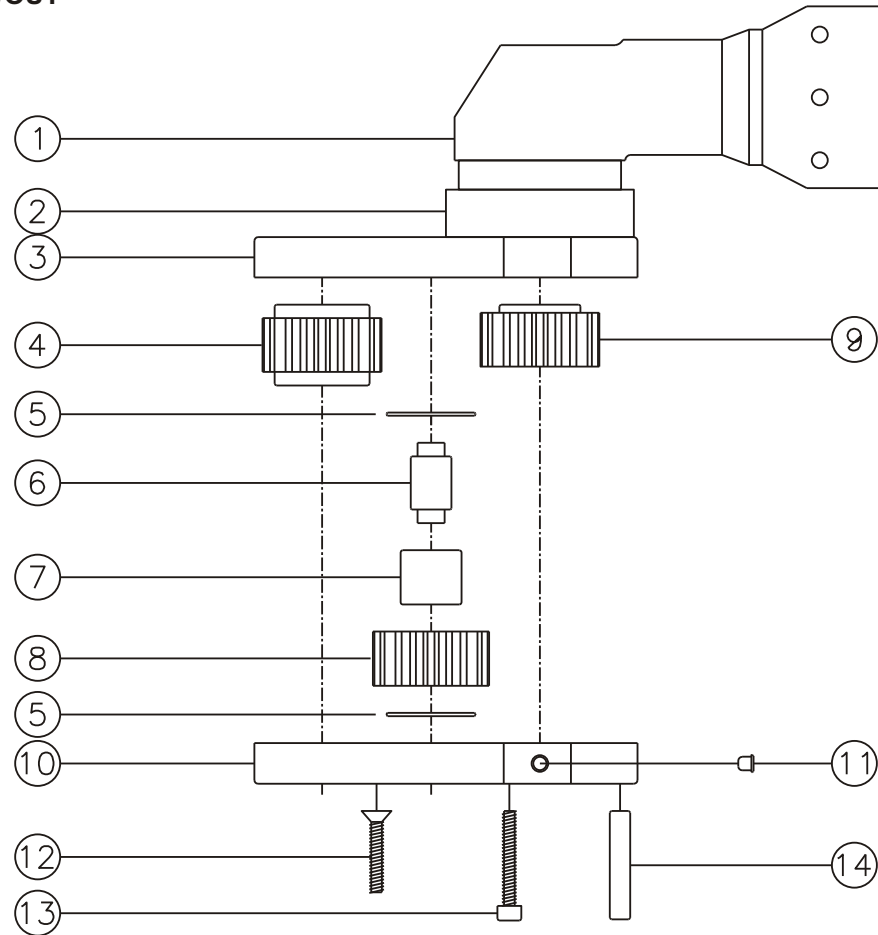
TOP VIEW



GEAR ASSEMBLY



PARTS BLOWOUT



| ITEM | DESCRIPTION | PART NO. | ITEM | DESCRIPTION | PART NO. | ITEM | DESCRIPTION | PART NO. |
|------|-----------------------|------------|------|----------------|----------|------|-------------|----------|
| 1 | Angle Head | S7 | 11 | Grease Fitting | 1877 | | | |
| 2 | Angle Head Adapter | HA-S7A5 | 12 | Screw #1 (2) | S-612 | | | |
| 3 | Gear Housing (Top) | 242420AS-H | 13 | Screw #2 (4) | S-614SH | | | |
| 4 | Socket Gear | 161624S-XX | 14 | Dowel Pin (3) | DP-1216 | | | |
| 5 | Thrust Race (2) | TRA-411 | | | | | | |
| 6 | Idler Pin | IP-6824 | | | | | | |
| 7 | Needle Bearing | B-68 | | | | | | |
| 8 | Idler Gear | 161616S | | | | | | |
| 9 | Drive Gear | 161618S-SD | | | | | | |
| 10 | Gear Housing (Bottom) | 242420AS-P | | | | | | |