



D & D PRODUCTION INC.

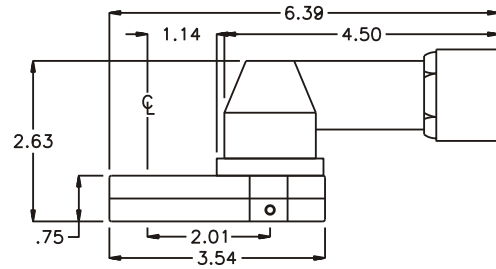
# ASSEMBLY NO. 242420AB

## HEAD NO. 1423

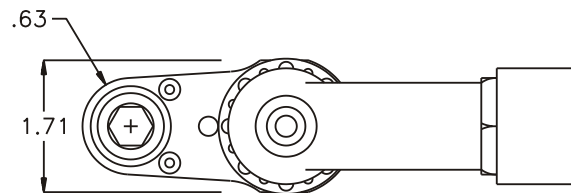
CROWFOOT ASS'Y  
Rev. A  
04-11-02

2500 WILLIAMS DRIVE • WATERFORD, MI • 48328 PHONE : (248) 334-2112 • FAX : (248) 334-0062

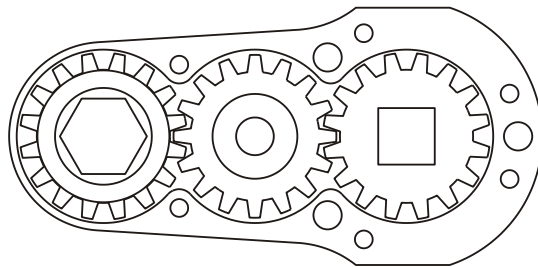
### SIDE VIEW



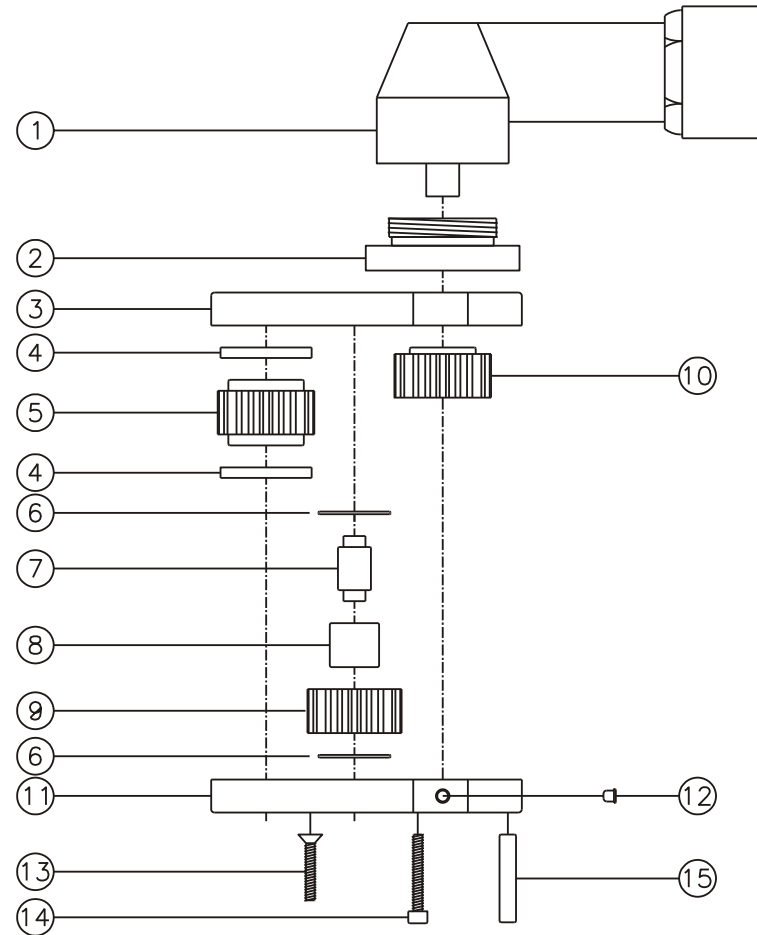
### TOP VIEW



### GEAR ASSEMBLY



### PARTS BLOWOUT



| ITEM | DESCRIPTION                      | PART NO.    | ITEM | DESCRIPTION           | PART NO.   | ITEM | DESCRIPTION | PART NO. |
|------|----------------------------------|-------------|------|-----------------------|------------|------|-------------|----------|
| 1    | Angle Head                       | AM3         | 11   | Gear Housing (Bottom) | 242420AB-P |      |             |          |
| 2    | Angle Head Adapter/Bearing Ass'y | HA-2809-AM3 | 12   | Grease Fitting        | 1877       |      |             |          |
| 3    | Gear Housing (Top)               | 242420AB-H  | 13   | Screw #1 (2)          | S-612      |      |             |          |
| 4    | Bushing (2)                      | A-4375-M1   | 14   | Screw #2 (4)          | S-614SH    |      |             |          |
| 5    | Socket Gear                      | 161624B-XX  | 15   | Dowel Pin (3)         | DP-1216    |      |             |          |
| 6    | Thrust Race (2)                  | TRA-411     |      |                       |            |      |             |          |
| 7    | Idler Pin                        | IP-6824     |      |                       |            |      |             |          |
| 8    | Needle Bearing                   | B-68        |      |                       |            |      |             |          |
| 9    | Idler Gear                       | 161616S     |      |                       |            |      |             |          |
| 10   | Drive Gear                       | 161618S-SD  |      |                       |            |      |             |          |