



D & D PRODUCTION INC.

ASSEMBLY NO. 242416

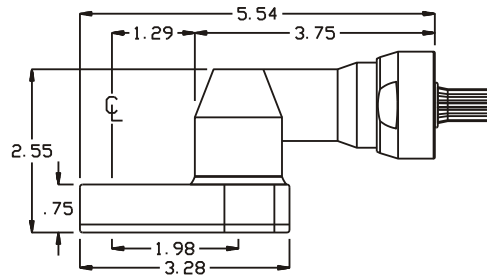
HEAD NO. 1332

CROWFOOT ASS'Y
Rev. A
01-04-95

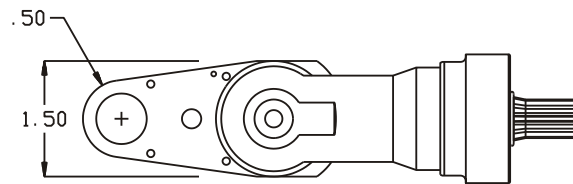
2500 WILLIAMS DRIVE • WATERFORD, MI • 48328

PHONE : (248) 334-2112 • FAX : (248) 334-0062

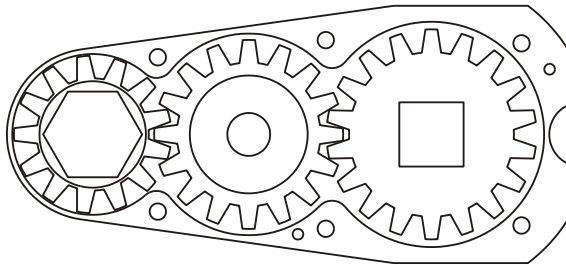
SIDE VIEW



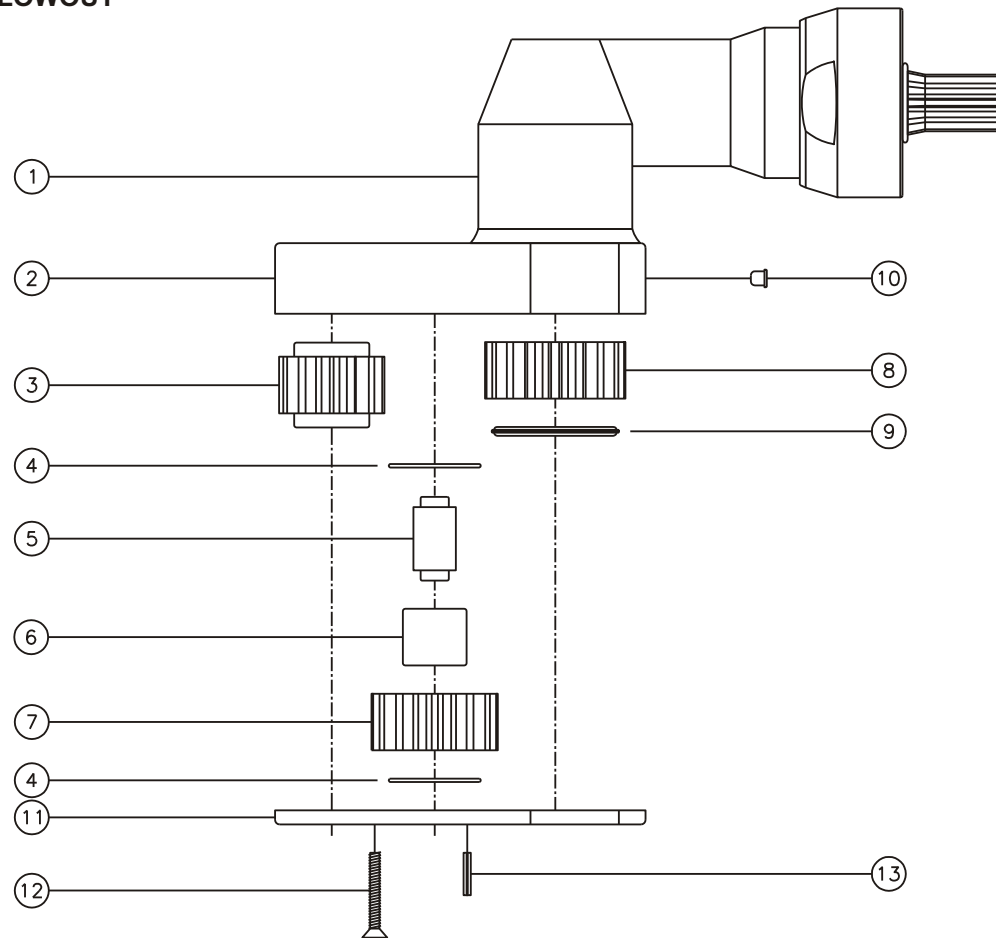
TOP VIEW



GEAR ASSEMBLY



PARTS BLOWOUT



| ITEM | DESCRIPTION | PART NO. | ITEM | DESCRIPTION | PART NO. | ITEM | DESCRIPTION | PART NO. |
|------|-----------------|-----------|------|--------------|----------|------|-------------|----------|
| 1 | Angle Head | 32 | 11 | Bottom Plate | 242416-P | | | |
| 2 | Gear Housing | 242416-H | 12 | Screw (6) | S-412 | | | |
| 3 | Socket Gear | 161324-XX | 13 | Roll Pin (2) | RP-406 | | | |
| 4 | Thrust Race (2) | TRA-613 | | | | | | |
| 5 | Idler Pin | IP-6824 | | | | | | |
| 6 | Needle Bearing | B-68 | | | | | | |
| 7 | Idler Gear | 161616 | | | | | | |
| 8 | Drive Gear | 161816-SD | | | | | | |
| 9 | Thrust Bearing | NTA-1018 | | | | | | |
| 10 | Grease Fitting | 1877 | | | | | | |