



D & D PRODUCTION INC.

ASSEMBLY NO. 242020AM

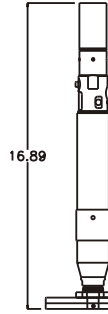
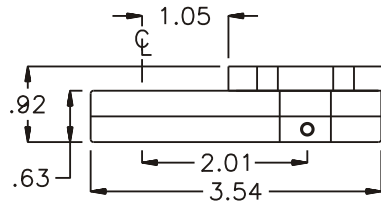
HEAD NO. 1285

CROWFOOT ASS'Y
Rev. B
05-31-02

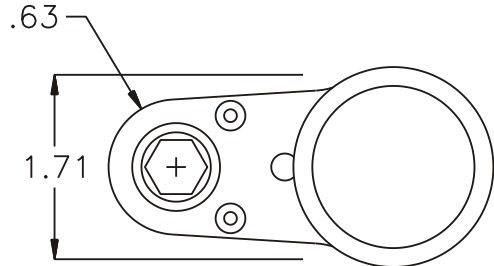
2500 WILLIAMS DRIVE • WATERFORD, MI • 48328

PHONE : (248) 334-2112 • FAX : (248) 334-0062

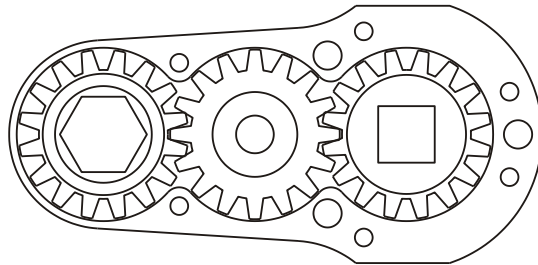
SIDE VIEW



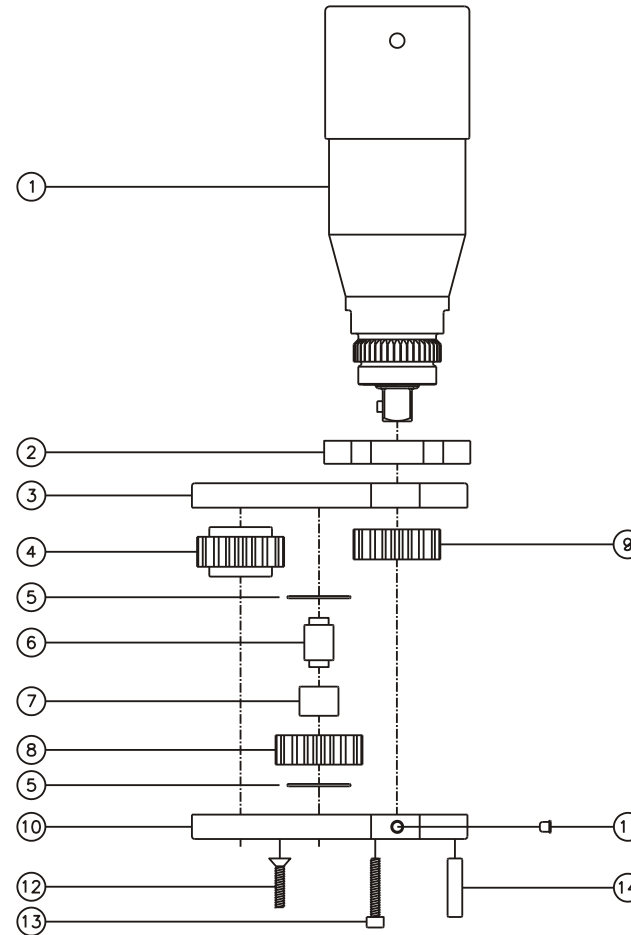
TOP VIEW



GEAR ASSEMBLY



PARTS BLOWOUT



ITEM	DESCRIPTION	PART NO.	ITEM	DESCRIPTION	PART NO.	ITEM	DESCRIPTION	PART NO.
1	Motor	GSE T066	11	Grease Fitting	1877			
2	Motor Adapter	TA-3009B-66IL	12	Screw #1 (2)	S-610			
3	Gear Housing (Top)	242020AM-H	13	Screw #2 (4)	S-612SH			
4	Socket Gear	161620-XX	14	Dowel Pin (3)	DP-1212			
5	Thrust Race (2)	TRA-613						
6	Idler Pin	IP-6620						
7	Needle Bearing	B-66						
8	Idler Gear	161612						
9	Drive Gear	161612-38SD						
10	Gear Housing (Bottom)	242020AM-P						