



D & D PRODUCTION INC.

ASSEMBLY NO. 241624-1-4

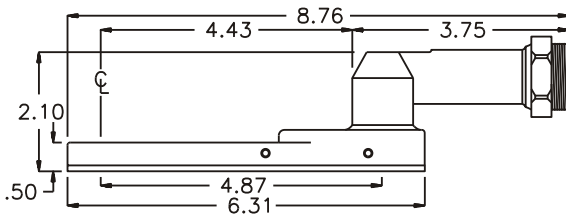
HEAD NO. 4200

CROWFOOT ASS'Y
Rev. D
10-11-01

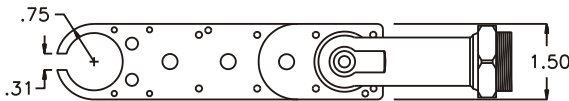
2500 WILLIAMS DRIVE • WATERFORD, MI • 48328

PHONE : (248) 334-2112 • FAX : (248) 334-0062

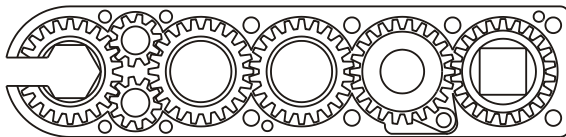
SIDE VIEW



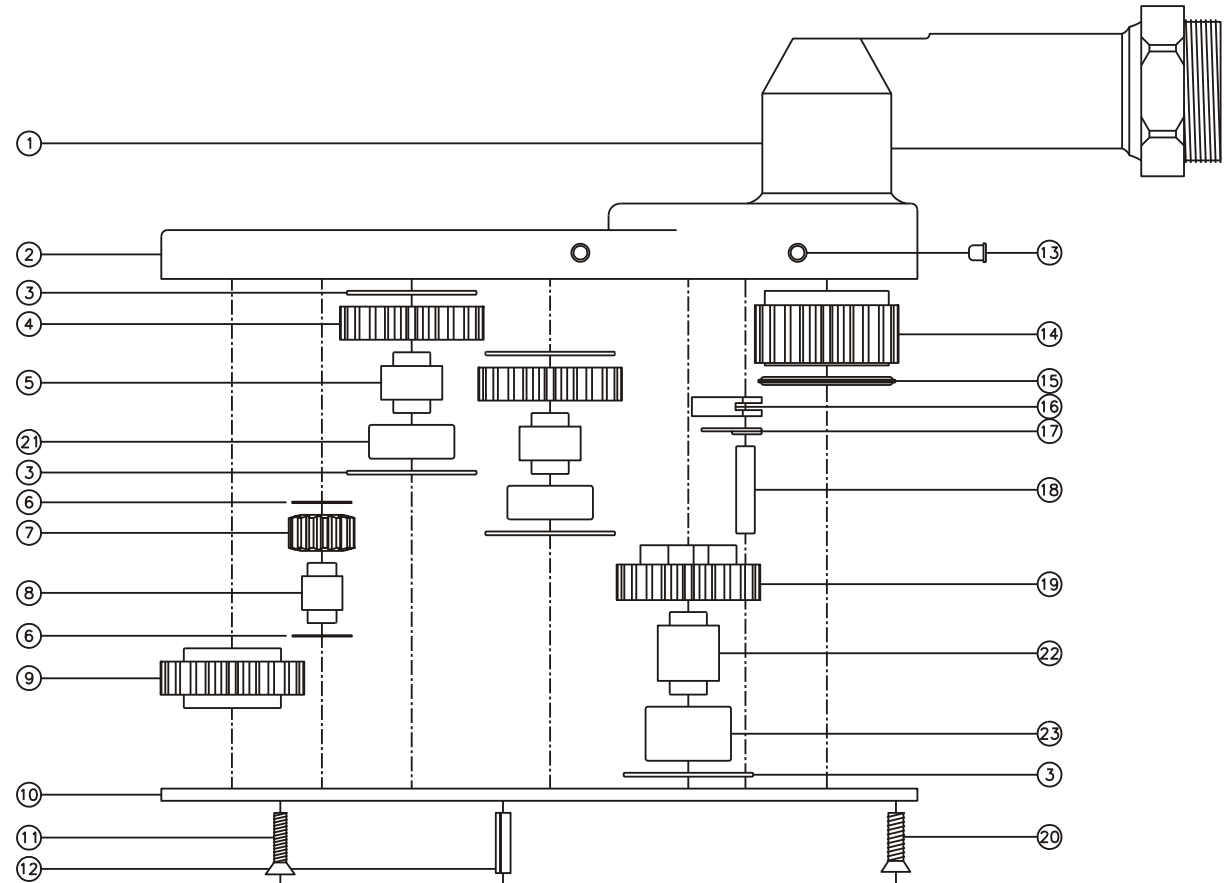
TOP VIEW



GEAR ASSEMBLY



PARTS BLOWOUT



ITEM	DESCRIPTION	PART NO.	ITEM	DESCRIPTION	PART NO.	ITEM	DESCRIPTION	PART NO.
1	Angle Head	A/C 36	11	Screw #1 (4)	S-608	21	Needle Bearing (2)	B-85-G
2	Gear Housing	241624-1-4-H	12	Roll Pin (2)	RP-808	22	Cam Pin	IP-8824
3	Lg. Thrust Race (5)	TRA-613	13	Grease Fitting (2)	1877	23	Needle Bearing	B-88
4	Lg. Idler Gear (2)	202209	14	Drive Gear	202219-SD			
5	Lg. Idler Pin (2)	IP-8516	15	Thrust Bearing	NTA-613			
6	Sm. Thrust Race (4)	TRA-010	16	Pawl	1004-P			
7	Sm. Idler Gear (2)	201109B	17	Pawl Spring	TS-156			
8	Sm. Idler Pin (2)	IP-0416	18	Pawl Pin	P-0524			
9	Socket Gear	202216-1-XX	19	Cam Gear	202216-C			
10	Bottom Plate	241624-1-4-P	20	Screw #2 (7)	S-808			