

D & D PRODUCTION INC.

ASSEMBLY NO. 241620-1-5

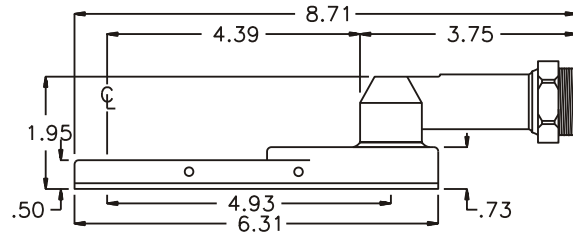
HEAD NO. 5351

CROWFOOT ASS'Y
Rev. E
02-15-93

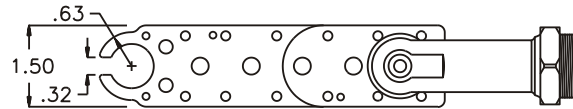
2500 WILLIAMS DRIVE • WATERFORD, MI • 48328

PHONE : (248) 334-2112 • FAX : (248) 334-0062

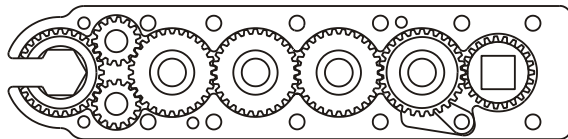
SIDE VIEW



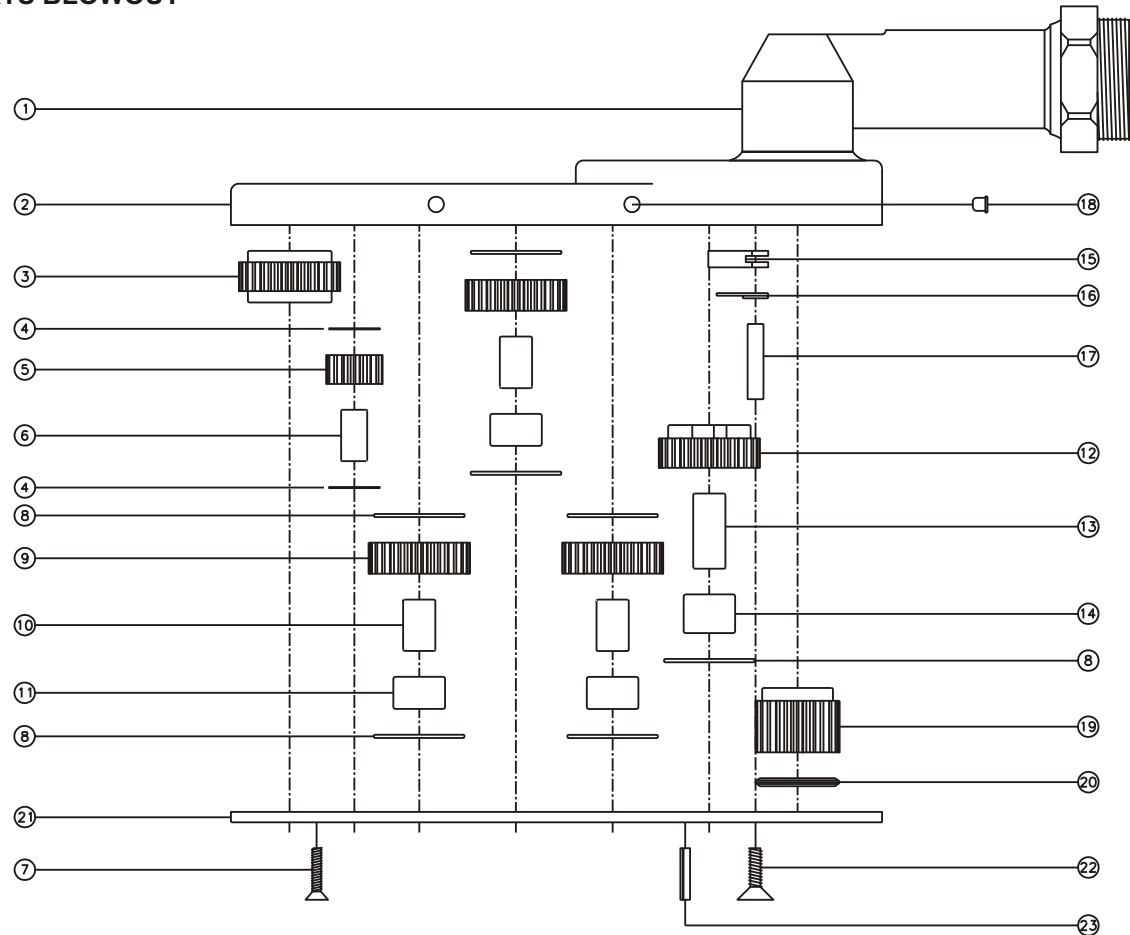
TOP VIEW



GEAR ASSEMBLY



PARTS BLOWOUT



ITEM	DESCRIPTION	PART NO.	ITEM	DESCRIPTION	PART NO.	ITEM	DESCRIPTION	PART NO.
1	Angle Head	A/C 26	11	Lg. Needle Bearing (3)	B-55	21	Bottom Plate	241620-1-5-P
2	Gear Housing	241620-1-5-H	12	Cam Gear	302814-C	22	Screw #2 (11)	S-608
3	Socket Gear	302816-1-XX	13	Cam Pin	IP-5623-S	23	Roll Pin (2)	RP-808
4	Sm. Thrust Race (4)	TRA-010	14	Cam Needle Bearing	B-56			
5	Sm. Idler Gear (2)	301510	15	Pawl	1004-P			
6	Sm. Idler Pin (2)	IP-0816-S	16	Pawl Spring	TS-156			
7	Screw #1 (2)	S-408	17	Pawl Pin	P-0523			
8	Lg. Thrust Race (7)	TRA-512	18	Grease Fitting (2)	1877			
9	Lg. Idler Gear (3)	302810	19	Drive Gear	302320-SD			
10	Lg. Idler Pin (3)	IP-5516-S	20	Thrust Bearing	NTA-613			