



D & D PRODUCTION INC.

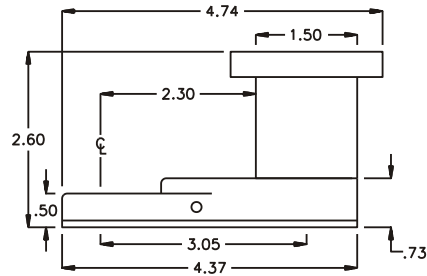
ASSEMBLY NO. 241620-1

HEAD NO. 8355

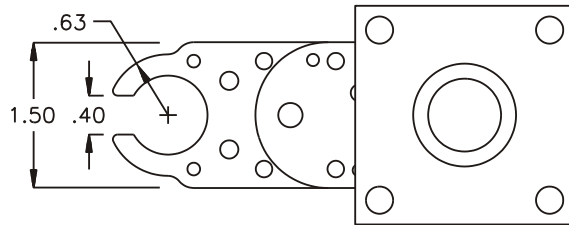
CROWFOOT ASS'Y
Rev. H
02-21-01

2500 WILLIAMS DRIVE • WATERFORD, MI • 48328 PHONE : (248) 334-2112 • FAX : (248) 334-0062

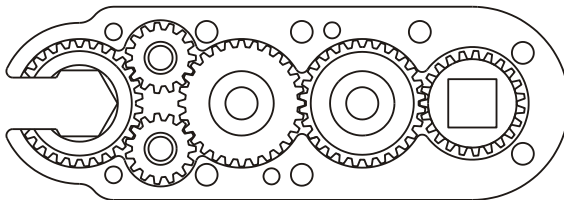
SIDE VIEW



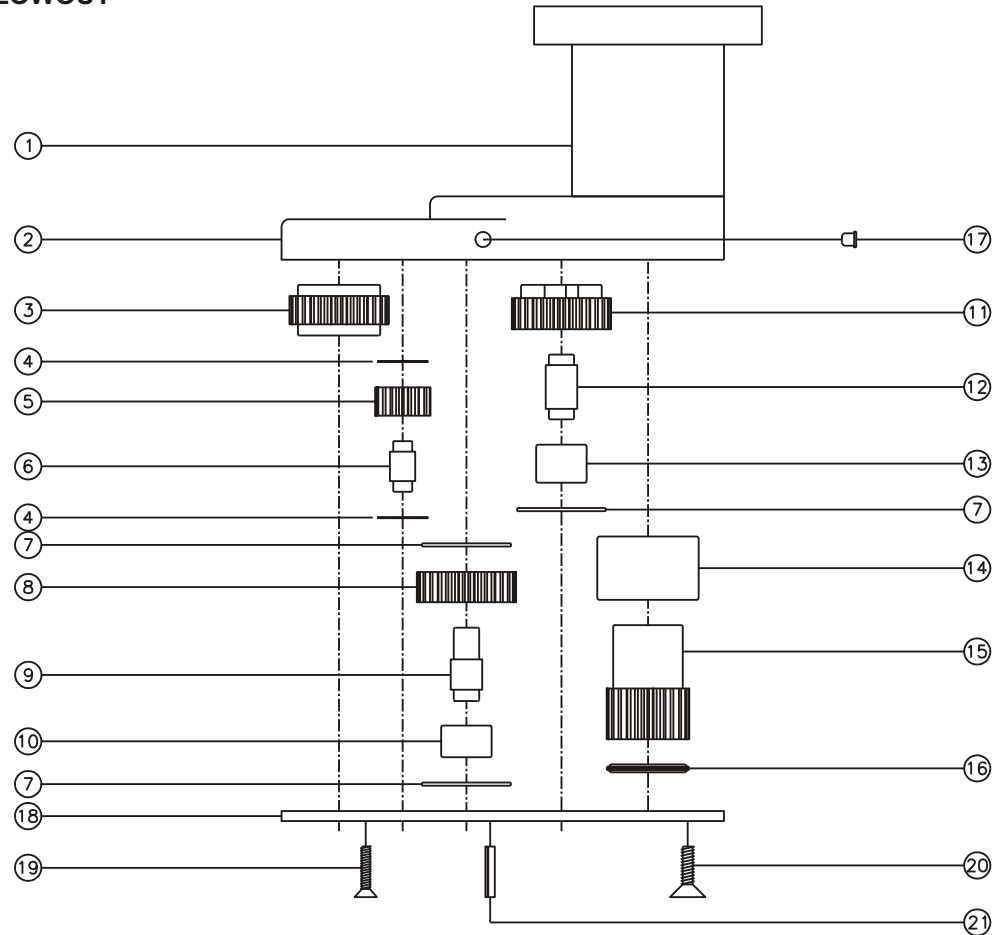
TOP VIEW



GEAR ASSEMBLY



PARTS BLOWOUT



ITEM	DESCRIPTION	PART NO.	ITEM	DESCRIPTION	PART NO.	ITEM	DESCRIPTION	PART NO.
1	Mounting Bracket	MU-2987	11	Cam Gear	302815-C	21	Roll Pin (2)	RP-808
2	Gear Housing	241620-1-H	12	Cam Pin	IP-5620			
3	Socket Gear	302816-1-XX	13	Needle Bearing	B-56			
4	Sm. Thrust Race (4)	TRA-010	14	Needle Bearing	B-1210			
5	Sm. Idler Gear (2)	301510	15	Drive Gear	302336-SD			
6	Sm. Idler Pin (2)	IP-0816B	16	Thrust Bearing	NTA-613			
7	Lg. Thrust Race (3)	TRA-411	17	Grease Fitting	1877			
8	Lg. Idler Gear	302810	18	Bottom Plate	241620-1-P			
9	Lg. Idler Pin	IP-5523	19	Screw #1 (2)	S-408			
10	Needle Bearing	B-55	20	Screw #2 (7)	S-608			