



D & D PRODUCTION INC.

# ASSEMBLY NO. 241618A-3

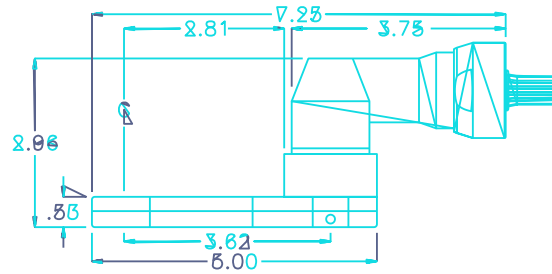
## HEAD NO. 3252

CROWFOOT ASS'Y  
Rev. A  
12-03-96

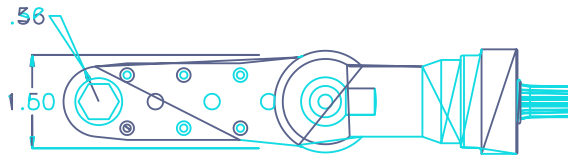
2500 WILLIAMS DRIVE • WATERFORD, MI • 48328

PHONE : (248) 334-2112 • FAX : (248) 334-0062

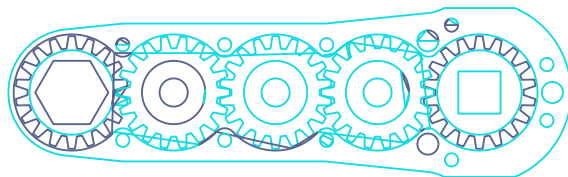
### SIDE VIEW



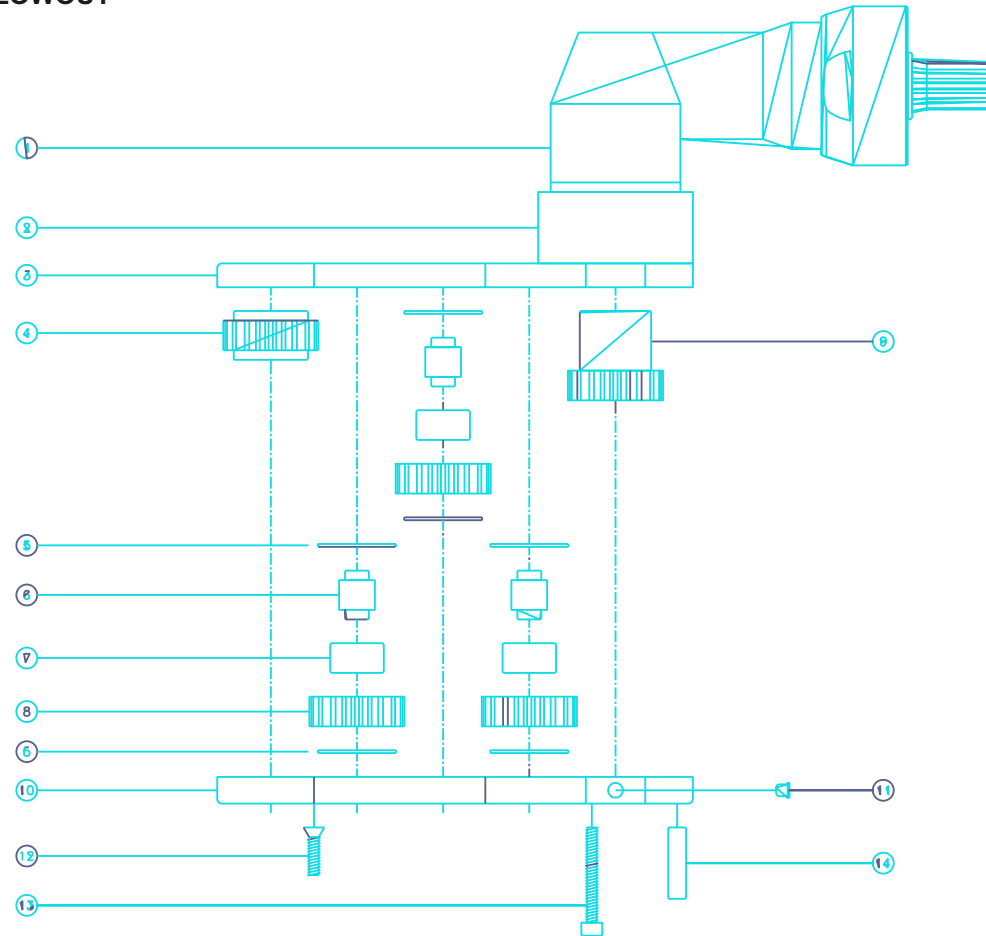
### TOP VIEW



### GEAR ASSEMBLY



### PARTS BLOWOUT



| ITEM | DESCRIPTION           | PART NO.    | ITEM | DESCRIPTION    | PART NO. | ITEM | DESCRIPTION | PART NO. |
|------|-----------------------|-------------|------|----------------|----------|------|-------------|----------|
| 1    | Angle Head            | 32          | 11   | Grease Fitting | 1877     |      |             |          |
| 2    | Housing Adapter       | HA32-322124 | 12   | Screw #1 (6)   | S-608    |      |             |          |
| 3    | Gear Housing (Top)    | 241618A-3-H | 13   | Screw #2 (4)   | S-616SH  |      |             |          |
| 4    | Socket Gear           | 201816-XX   | 14   | Dowel Pin (3)  | DP-1212  |      |             |          |
| 5    | Thrust Race (6)       | TRA-411     |      |                |          |      |             |          |
| 6    | Idler Pin (3)         | IP-6516     |      |                |          |      |             |          |
| 7    | Needle Bearing (3)    | B-65        |      |                |          |      |             |          |
| 8    | Idler Gear (3)        | 201810      |      |                |          |      |             |          |
| 9    | Drive Gear            | 201830-SD   |      |                |          |      |             |          |
| 10   | Gear Housing (Bottom) | 241618A-3-P |      |                |          |      |             |          |