

D & D PRODUCTION INC.

ASSEMBLY NO. 241618A-2

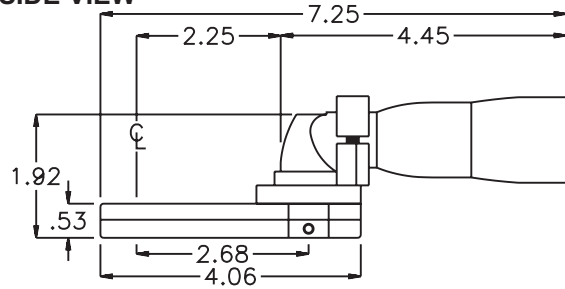
HEAD NO. 3249

CROWFOOT ASS'Y
Rev. A
12-28-06

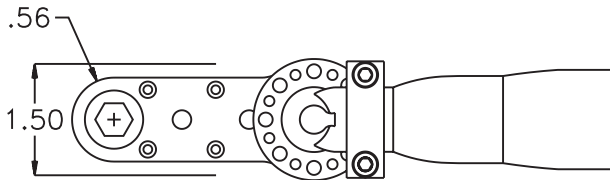
2500 WILLIAMS DRIVE • WATERFORD, MI • 48328

PHONE : (248) 334-2112 • FAX : (248) 334-0062

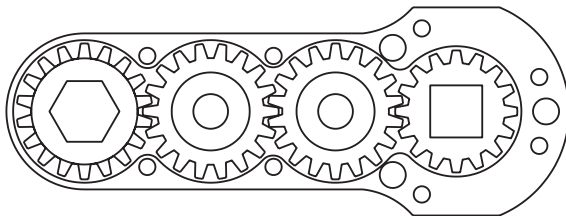
SIDE VIEW



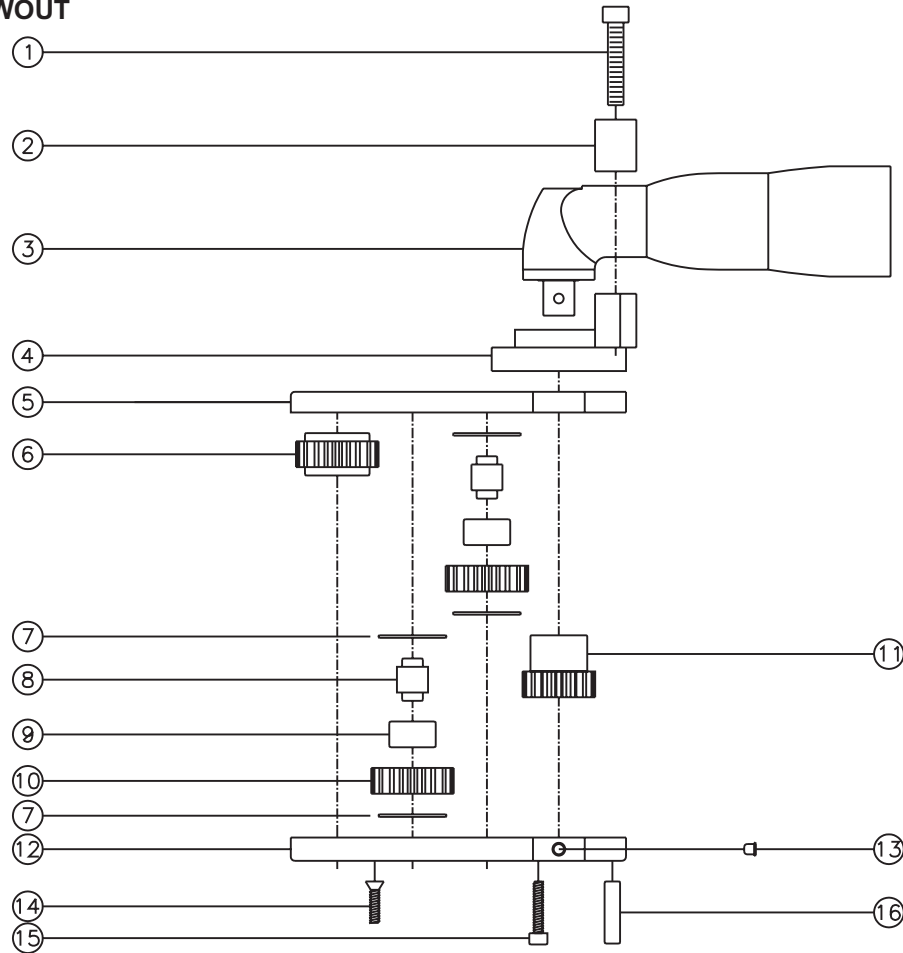
TOP VIEW



GEAR ASSEMBLY



PARTS BLOWOUT



ITEM	DESCRIPTION	PART NO.	ITEM	DESCRIPTION	PART NO.	ITEM	DESCRIPTION	PART NO.
1	Screw #1 (2)	S-1016SHC	11	Drive Gear	201624-38SD			
2	Yoke	FA-2609C-R16-10	12	Gear Housing (Bottom)	241618A-2-P			
3	Motor	LTV 29R16-10	13	Grease Fitting	1877			
4	Adapter	FA-2609-R16-10	14	Screw #2 (4)	S-608			
5	Gear Housing (Top)	241618A-2-H	15	Screw #3 (4)	S-610SH			
6	Socket Gear	201816-XX	16	Dowel Pin (3)	DP-1212			
7	Thrust Race (4)	TRA-411						
8	Idler Pin (2)	IP-6516						
9	Needle Bearing (2)	B-65						
10	Idler Gear (2)	201810						