



D & D PRODUCTION INC.

ASSEMBLY NO. 241618A-2

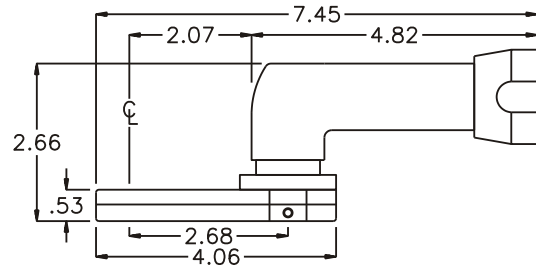
HEAD NO. 3248

CROWFOOT ASS'Y
Rev. A
08-30-00

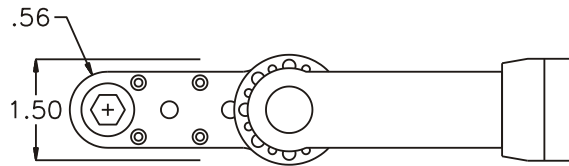
2500 WILLIAMS DRIVE • WATERFORD, MI • 48328

PHONE : (248) 334-2112 • FAX : (248) 334-0062

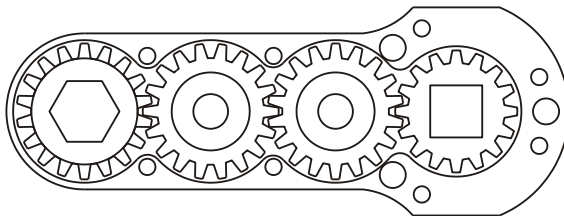
SIDE VIEW



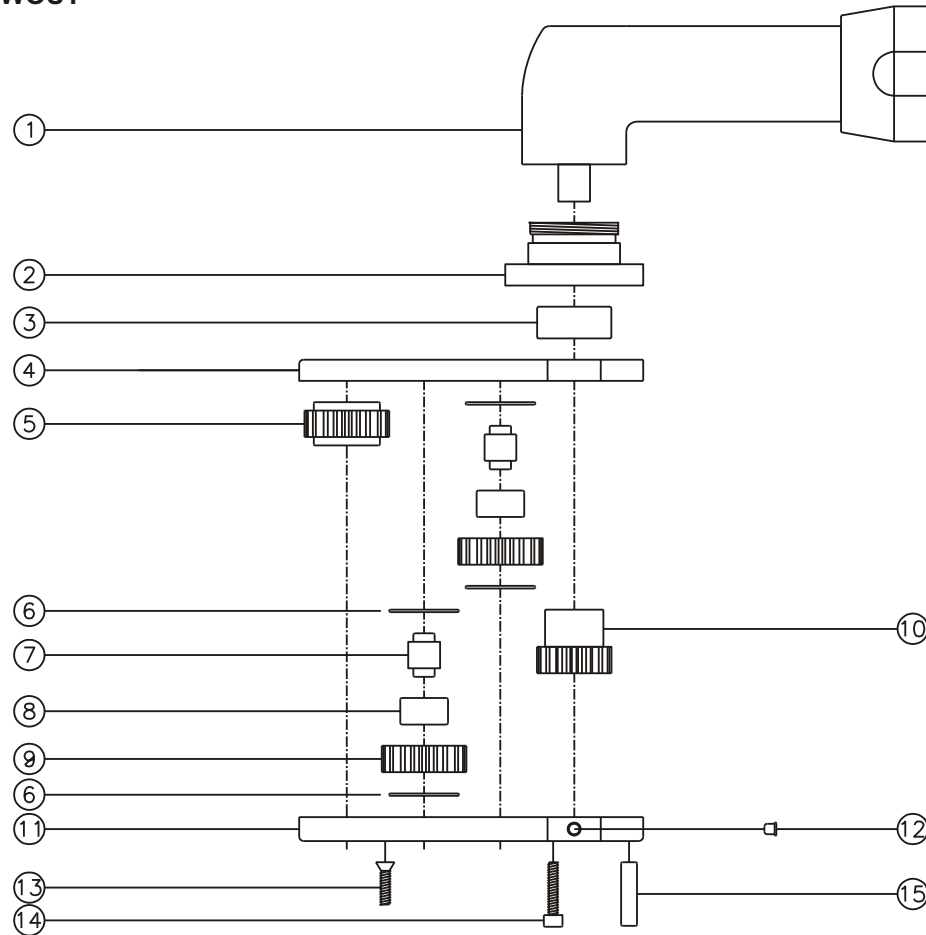
TOP VIEW



GEAR ASSEMBLY



PARTS BLOWOUT



| ITEM | DESCRIPTION | PART NO. | ITEM | DESCRIPTION | PART NO. | ITEM | DESCRIPTION | PART NO. |
|------|--------------------|-------------|------|-----------------------|-------------|------|-------------|----------|
| 1 | Angle Head | IR 2S6 | 11 | Gear Housing (Bottom) | 241618A-2-P | | | |
| 2 | Angle Head Adapter | HA-2616-S6 | 12 | Grease Fitting | 1877 | | | |
| 3 | Needle Bearing | B-116 | 13 | Screw #1 (4) | S-608 | | | |
| 4 | Gear Housing (Top) | 241618A-2-H | 14 | Screw #2 (4) | S-610SH | | | |
| 5 | Socket Gear | 201816-XX | 15 | Dowel Pin (3) | DP-1212 | | | |
| 6 | Thrust Race (4) | TRA-411 | | | | | | |
| 7 | Idler Pin (2) | IP-6516 | | | | | | |
| 8 | Needle Bearing (2) | B-65 | | | | | | |
| 9 | Idler Gear (2) | 201810 | | | | | | |
| 10 | Drive Gear | 201624-38SD | | | | | | |