



D & D PRODUCTION INC.®

# ASSEMBLY NO. 241618-1-5

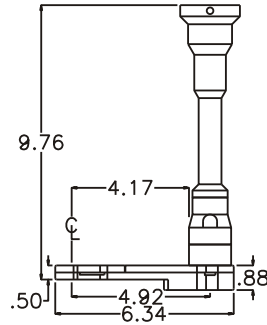
## HEAD NO. 5357

CROWFOOT ASS'Y  
Rev. A  
11-11-02

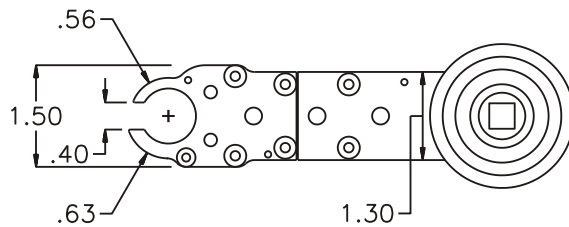
2500 WILLIAMS DRIVE • WATERFORD, MI • 48328

PHONE : (248) 334-2112 • FAX : (248) 334-0062

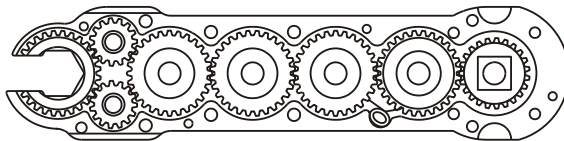
SIDE VIEW



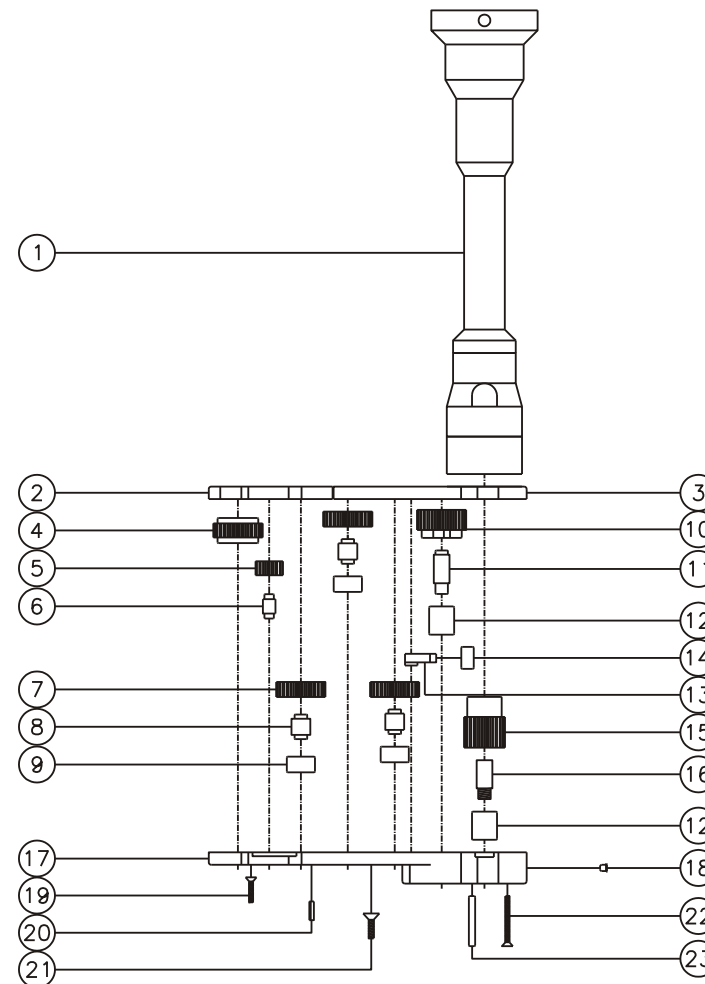
TOP VIEW



GEAR ASSEMBLY



PARTS BLOWOUT



ITEM	DESCRIPTION	PART NO.	ITEM	DESCRIPTION	PART NO.	ITEM	DESCRIPTION	PART NO.
1	Clutch Assembly	CTA-10A-S6L112	11	Cam Pin	IP-5928A	21	Screw #2 (6)	S-608
2	Top Plate (Front)	241618-1-5-FP	12	Needle Bearing (2)	B-59	22	Screw #3 (4)	S-416
3	Top Plate (Rear)	241618-1-5-RP	13	Pawl	0805-PS-P	23	Dowel Pin (2)	DP-816
4	Socket Gear	302816-XX	14	Pawl Spring	RS-0814			
5	Sm. Idler Gear (2)	301509	15	Drive Gear	302332-38SD			
6	Sm. Idler Pin (2)	IP-0816B	16	Drive Gear Pin	TP-5925			
7	Lg. Idler Gear (3)	302810	17	Gear Housing	241618-1-5-H			
8	Lg. Idler Pin (3)	IP-6516B	18	Grease Fitting	1877			
9	Needle Bearing (3)	B-65	19	Screw #1	S-408			
10	Cam Gear	302818-C	20	Roll Pin (4)	RP-606			