



D & D PRODUCTION INC.®

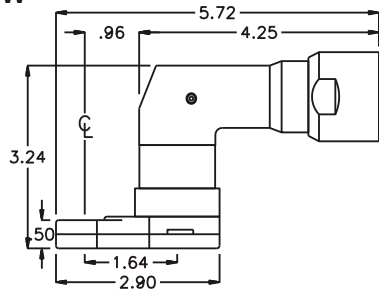
ASSEMBLY NO. 241616A

HEAD NO. 1065

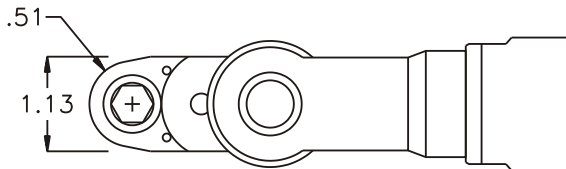
CROWFOOT ASS'Y
Rev. A
10-07-03

2500 WILLIAMS DRIVE • WATERFORD, MI • 48328 PHONE : (248) 334-2112 • FAX : (248) 334-0062

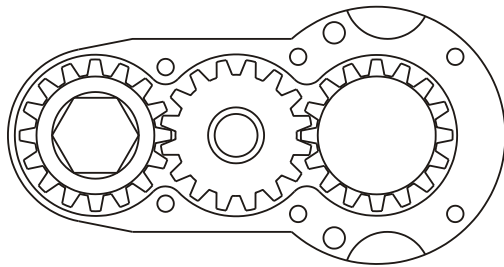
SIDE VIEW



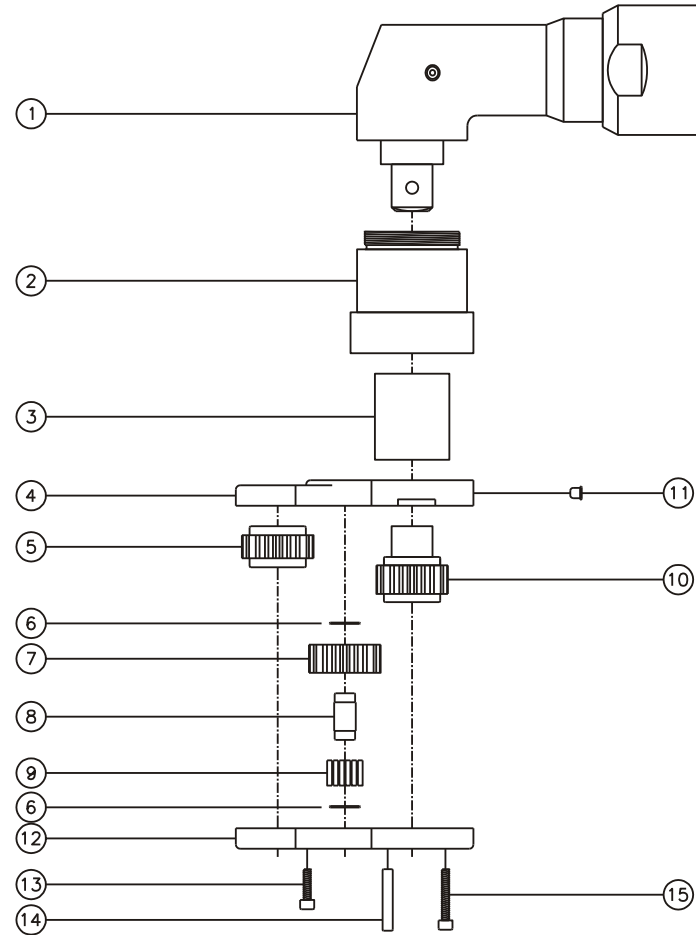
TOP VIEW



GEAR ASSEMBLY



PARTS BLOWOUT



ITEM	DESCRIPTION	PART NO.	ITEM	DESCRIPTION	PART NO.	ITEM	DESCRIPTION	PART NO.
1	Angle Head	IR 3S8	11	Grease Fitting	1877			
2	Angle Head Adapter	LA-4840-3S8	12	Gear Housing (Bottom)	241616A-P			
3	Drive Coupling	DS-122933	13	Screw #1 (2)	S-406SH			
4	Gear Housing (Top)	241616A-H	14	Dowel Pin (2)	DP-812			
5	Socket Gear	201616-XX	15	Screw #2 (4)	S-410SH			
6	Thrust Race (2)	W-1390-016						
7	Idler Gear	201611						
8	Idler Pin	IP-0818						
9	Bearing Needles (17)	LR15M78						
10	Drive Gear	201630-12MSD						