



D & D PRODUCTION INC.®

ASSEMBLY NO. 241616A

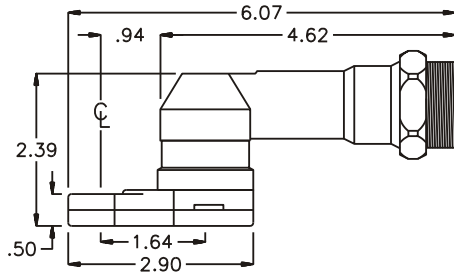
HEAD NO. 1060

CROWFOOT ASS'Y
Rev. A
08-02-94

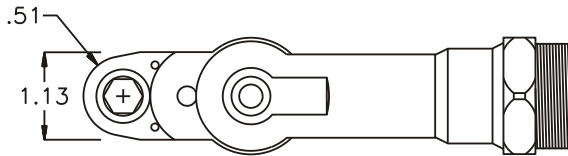
2500 WILLIAMS DRIVE • WATERFORD, MI • 48328

PHONE : (248) 334-2112 • FAX : (248) 334-0062

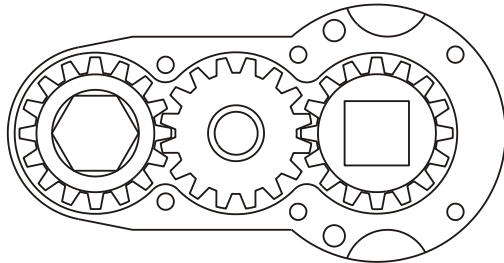
SIDE VIEW



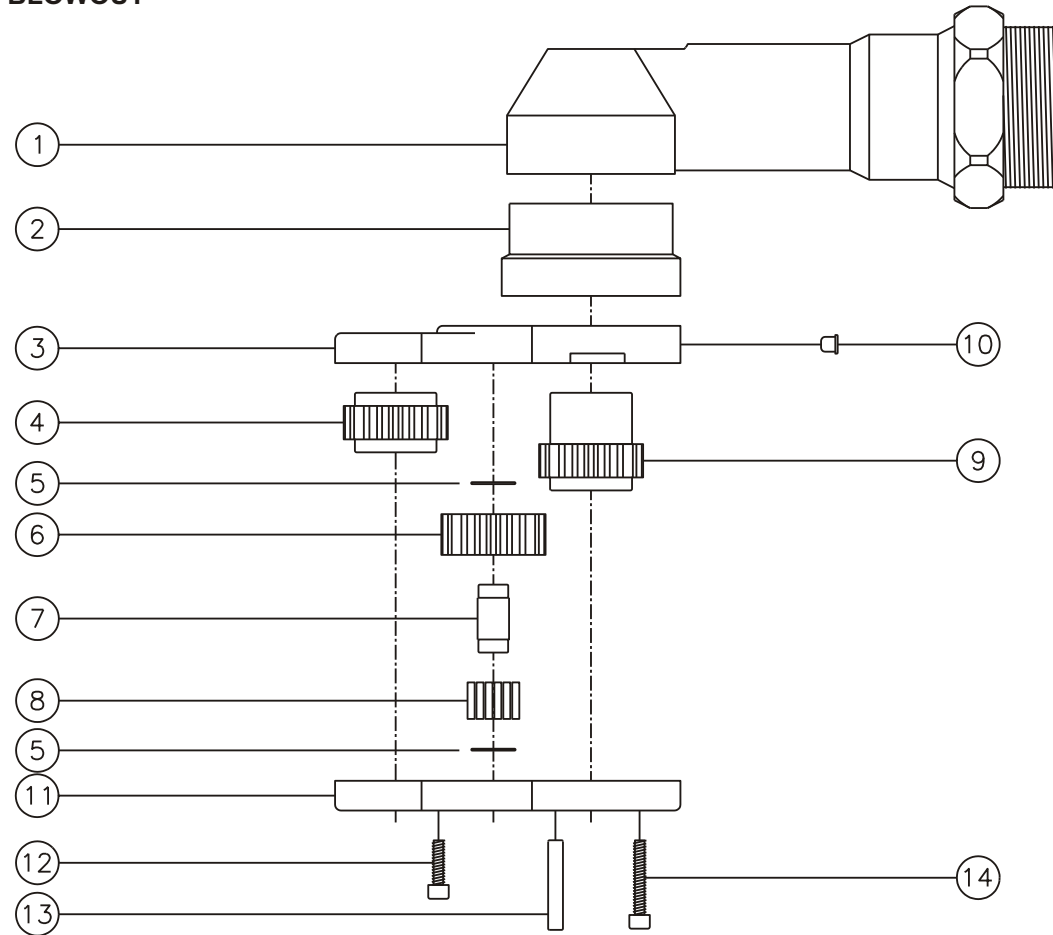
TOP VIEW



GEAR ASSEMBLY



PARTS BLOWOUT



| ITEM | DESCRIPTION | PART NO. | ITEM | DESCRIPTION | PART NO. | ITEM | DESCRIPTION | PART NO. |
|------|----------------------|------------|------|-----------------------|-----------|------|-------------|----------|
| 1 | Angle Head | ETV 40 | 11 | Gear Housing (Bottom) | 241616A-P | | | |
| 2 | Angle Head Adapter | HA 3530 | 12 | Screw #1 (2) | S-406SH | | | |
| 3 | Gear Housing (Top) | 241616A-H | 13 | Dowel Pin (2) | DP-812 | | | |
| 4 | Socket Gear | 201616-XX | 14 | Screw #2 (4) | S-410SH | | | |
| 5 | Thrust Race (2) | W-1390-016 | | | | | | |
| 6 | Idler Gear | 201611 | | | | | | |
| 7 | Idler Pin | IP-0818 | | | | | | |
| 8 | Bearing Needles (17) | LR15M78 | | | | | | |
| 9 | Drive Gear | 201630-SD | | | | | | |
| 10 | Grease Fitting | 1877 | | | | | | |