



D & D PRODUCTION INC.®

ASSEMBLY NO. 241614

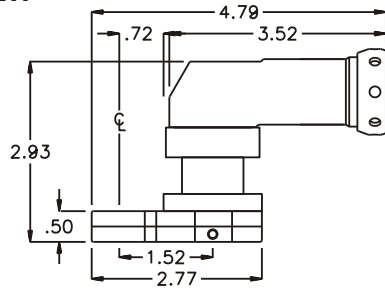
HEAD NO. 1277

CROWFOOT ASS'Y
Rev. A
03-01-03

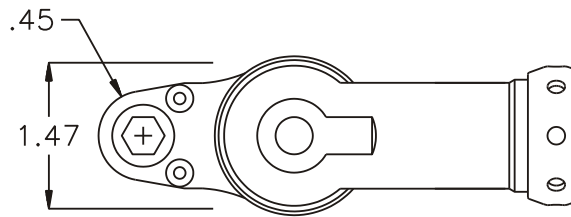
2500 WILLIAMS DRIVE • WATERFORD, MI • 48328

PHONE : (248) 334-2112 • FAX : (248) 334-0062

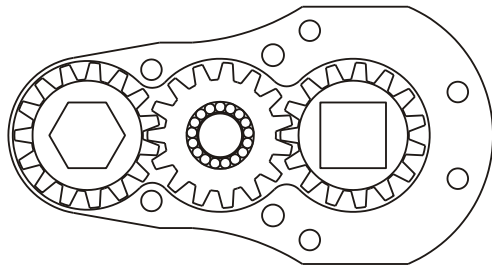
SIDE VIEW



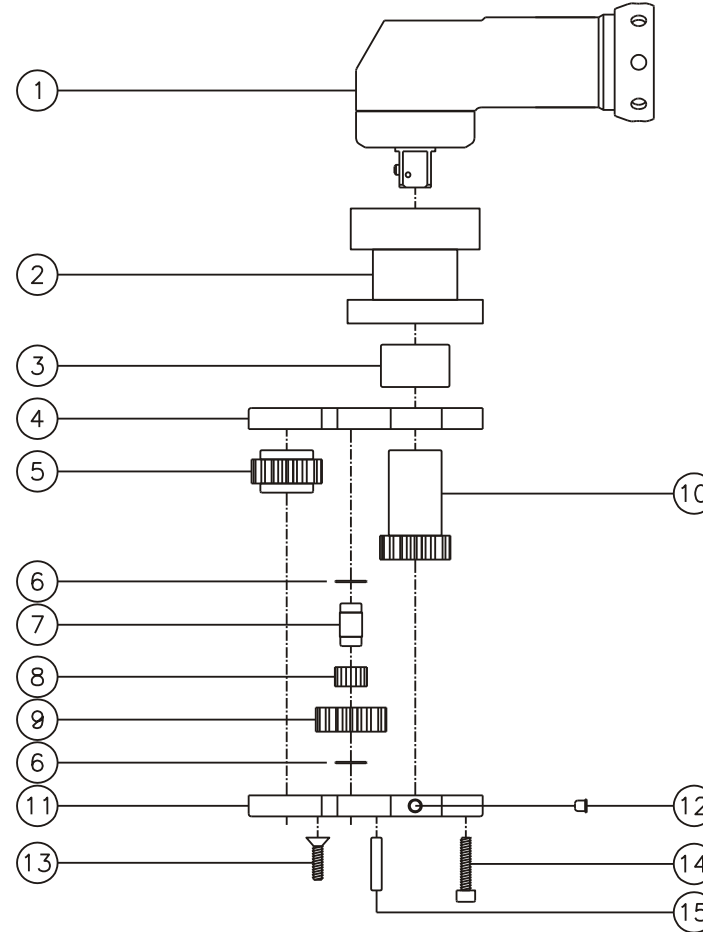
TOP VIEW



GEAR ASSEMBLY



PARTS BLOWOUT



| ITEM | DESCRIPTION | PART NO. | ITEM | DESCRIPTION | PART NO. | ITEM | DESCRIPTION | PART NO. |
|------|----------------------|-------------|------|-----------------------|----------|------|-------------|----------|
| 1 | Angle Head | A/C #10 | 11 | Gear Housing (Bottom) | 241614-P | | | |
| 2 | Angle Head Adapter | HAL-2632 | 12 | Grease Fitting | 1877 | | | |
| 3 | Needle Bearing | B-108 | 13 | Screw #1 (2) | S-608 | | | |
| 4 | Gear Housing (Top) | 241614-H2 | 14 | Screw #2 (4) | S-610SH | | | |
| 5 | Socket Gear | 201516-XX | 15 | Dowel Pin (2) | DP-810 | | | |
| 6 | Thrust Race (2) | W-1390-016 | | | | | | |
| 7 | Idler Pin | IP-0816 | | | | | | |
| 8 | Bearing Needles (17) | LR15M58 | | | | | | |
| 9 | Idler Gear | 201509 | | | | | | |
| 10 | Drive Gear | 201541-38SD | | | | | | |