



D & D PRODUCTION INC.

ASSEMBLY NO. 241614

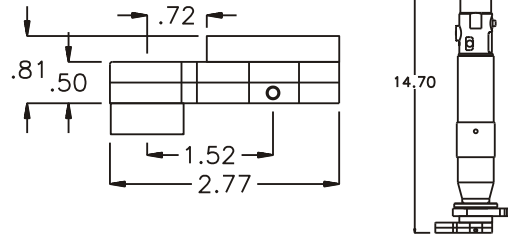
HEAD NO. 1266

CROWFOOT ASS'Y
Rev. A
07-11-01

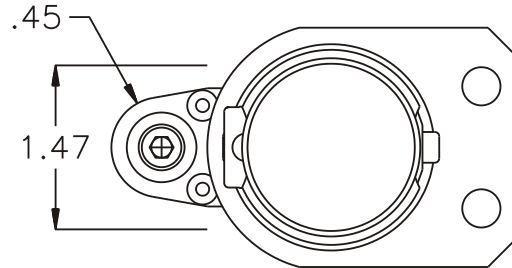
2500 WILLIAMS DRIVE • WATERFORD, MI • 48328

PHONE : (248) 334-2112 • FAX : (248) 334-0062

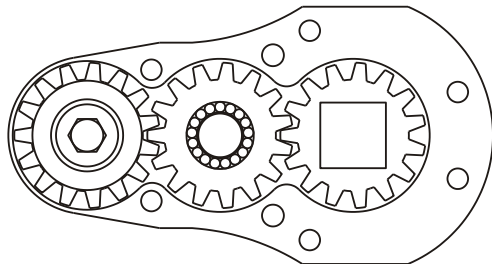
SIDE VIEW



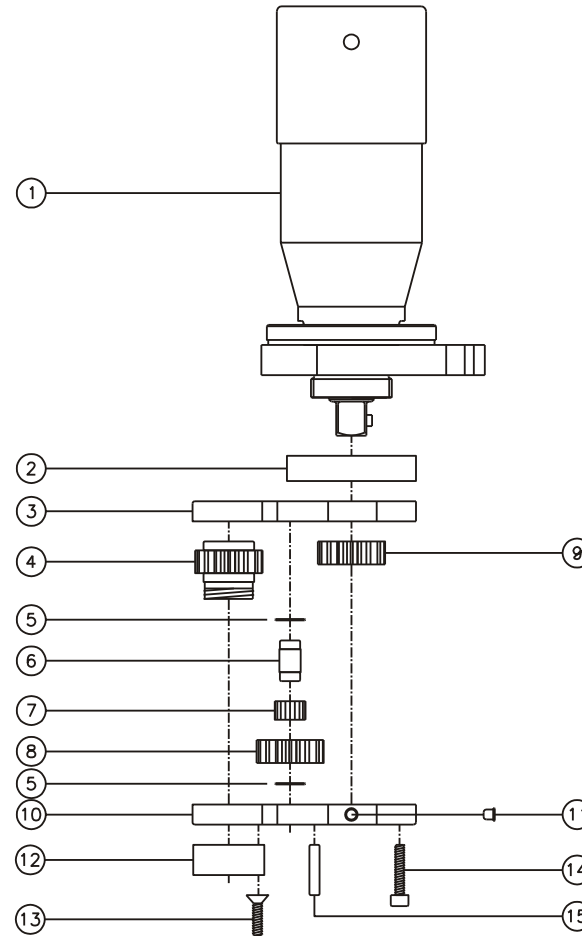
TOP VIEW



GEAR ASSEMBLY



PARTS BLOWOUT



| ITEM | DESCRIPTION | PART NO. | ITEM | DESCRIPTION | PART NO. | ITEM | DESCRIPTION | PART NO. |
|------|-----------------------|---------------|------|-----------------|------------|------|-------------|----------|
| 1 | Motor | GSE 46 Series | 11 | Grease Fitting | 1877 | | | |
| 2 | Motor Adapter | HA-2610-46I | 12 | Threaded Socket | TS-282466F | | | |
| 3 | Gear Housing (Top) | 241614-H | 13 | Screw #1 (2) | S-608 | | | |
| 4 | Socket Gear | 201516-N2 | 14 | Screw #2 (4) | S-610SH | | | |
| 5 | Thrust Race (2) | W-1390-016 | 15 | Dowel Pin (2) | DP-810 | | | |
| 6 | Idler Pin | IP-0816 | | | | | | |
| 7 | Bearing Needles (17) | LR15M58 | | | | | | |
| 8 | Idler Gear | 201509 | | | | | | |
| 9 | Drive Gear | 201509-SD | | | | | | |
| 10 | Gear Housing (Bottom) | 241614-P | | | | | | |