



D & D PRODUCTION INC.

# ASSEMBLY NO. 241212

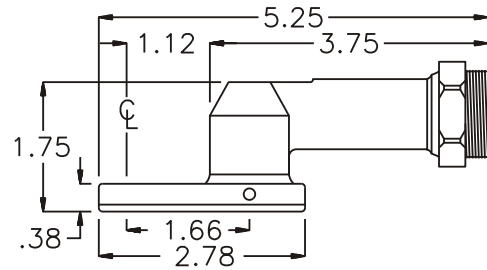
## HEAD NO. 1100

CROWFOOT ASS'Y  
Rev. A  
07-08-95

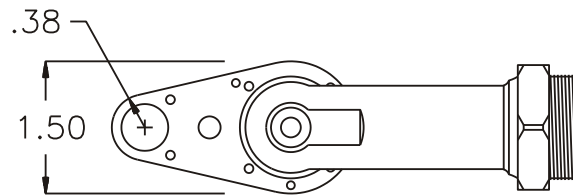
2500 WILLIAMS DRIVE • WATERFORD, MI • 48328

PHONE : (248) 334-2112 • FAX : (248) 334-0062

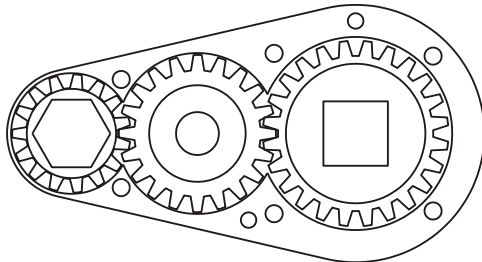
### SIDE VIEW



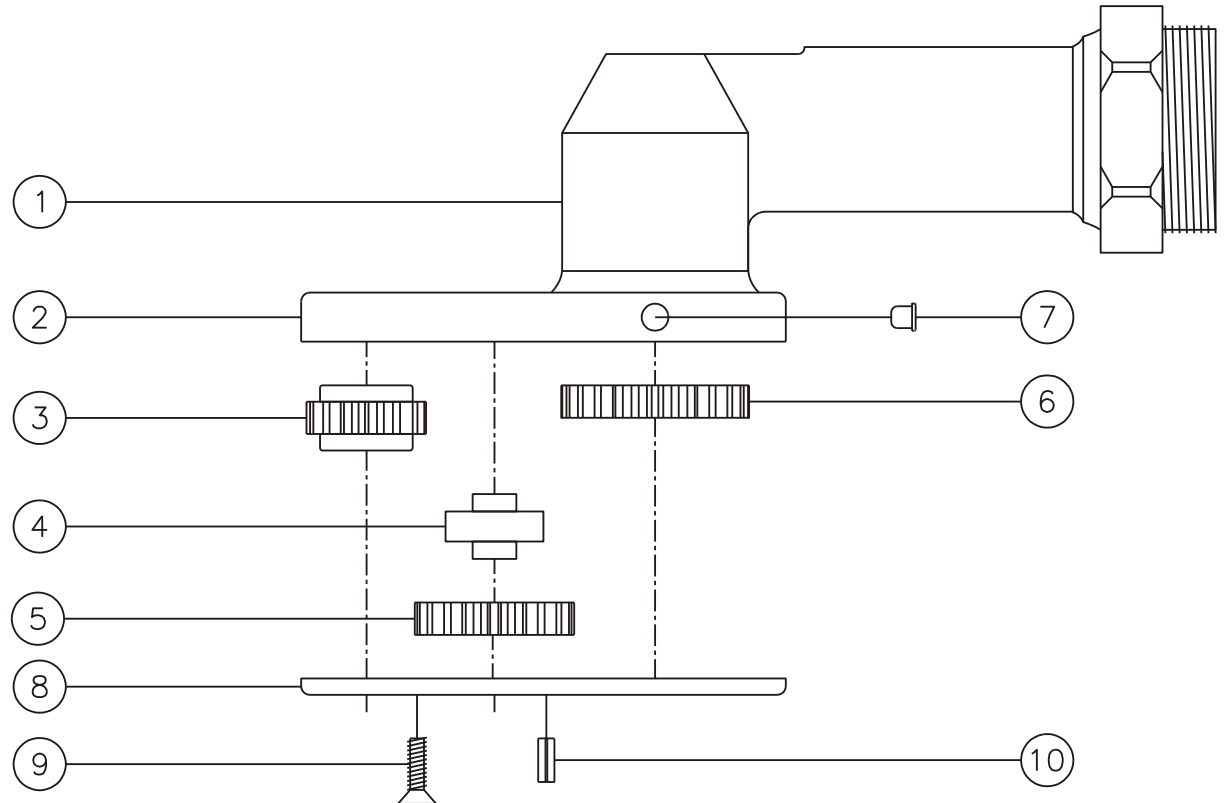
### TOP VIEW



### GEAR ASSEMBLY



### PARTS BLOWOUT



| ITEM | DESCRIPTION    | PART NO.  | ITEM | DESCRIPTION | PART NO. | ITEM | DESCRIPTION | PART NO. |
|------|----------------|-----------|------|-------------|----------|------|-------------|----------|
| 1    | Angle Head     | A/C 26    |      |             |          |      |             |          |
| 2    | Gear Housing   | 241212-H  |      |             |          |      |             |          |
| 3    | Socket Gear    | 241512-XX |      |             |          |      |             |          |
| 4    | Idler Pin      | IP-1812   |      |             |          |      |             |          |
| 5    | Idler Gear     | 242006    |      |             |          |      |             |          |
| 6    | Drive Gear     | 242406-SD |      |             |          |      |             |          |
| 7    | Grease Fitting | 1877      |      |             |          |      |             |          |
| 8    | Bottom Plate   | 241212-P  |      |             |          |      |             |          |
| 9    | Screw (6)      | S-406     |      |             |          |      |             |          |
| 10   | Roll Pin (2)   | RP-604    |      |             |          |      |             |          |