

D & D PRODUCTION INC.

ASSEMBLY NO. 202420-L6

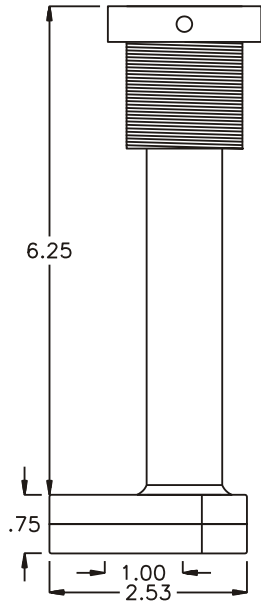
HEAD NO. 0405

CROWFOOT ASS'Y
Rev. A
03-06-94

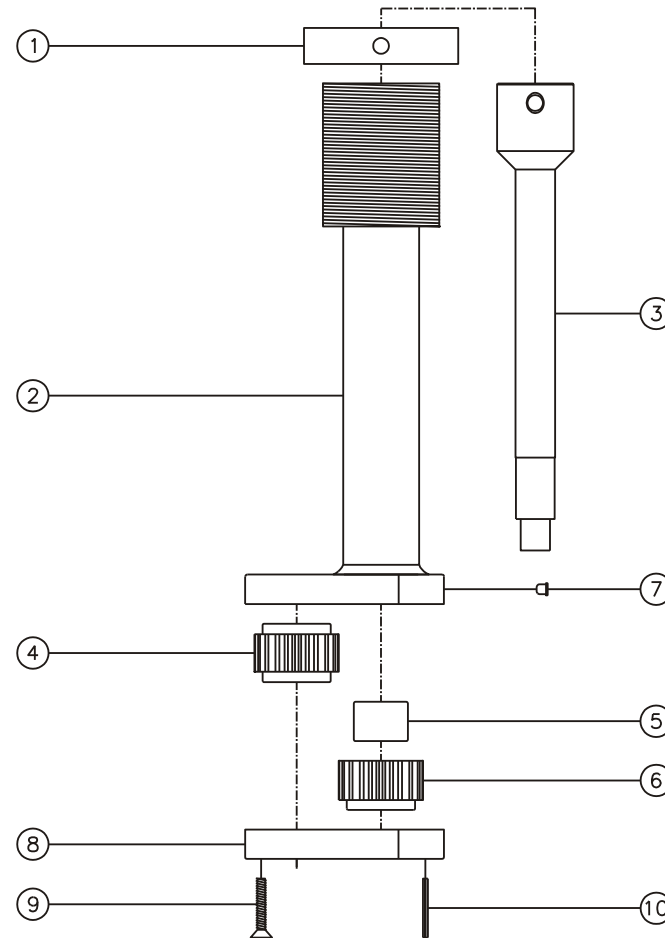
2500 WILLIAMS DRIVE • WATERFORD, MI • 48328

PHONE : (248) 334-2112 • FAX : (248) 334-0062

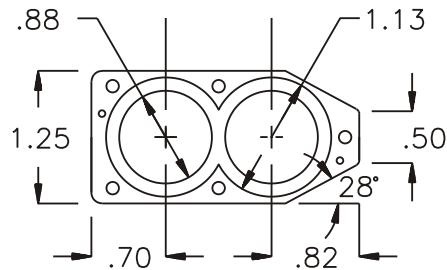
SIDE VIEW



PARTS BLOWOUT



BOTTOM VIEW



| ITEM | DESCRIPTION | PART NO. | ITEM | DESCRIPTION | PART NO. | ITEM | DESCRIPTION | PART NO. |
|------|-----------------------|-----------|------|-------------|----------|------|-------------|----------|
| 1 | Lock Nut | LN-2024 | | | | | | |
| 2 | Gear Housing (Top) | LH-2024-H | | | | | | |
| 3 | Drive Spindle | DS-3806 | | | | | | |
| 4 | Socket Gear | 202024-XX | | | | | | |
| 5 | Needle Bearing | B-88 | | | | | | |
| 6 | Drive Gear | 202020-SD | | | | | | |
| 7 | Grease Fitting | 1877 | | | | | | |
| 8 | Gear Housing (Bottom) | LH-2024-P | | | | | | |
| 9 | Screw (5) | S-612 | | | | | | |
| 10 | Roll Pin (2) | RP-412 | | | | | | |